

PPE and Welding Accessories

PERSONAL PROTECTION

WELDING TOOLS AND ACCESSORIES

SPECIAL PROCESS EQUIPMENT





World

Since 1904, ESAB has been both a pioneer and leader in welding and cutting development technology. Today ESAB combines world leadership with global applications expertise.



leader

in welding and cutting technology and systems

With over 100 years of experience, and a presence in over 80 countries worldwide, ESAB is probably the most recognised brand in welding and cutting with a product portfolio, which includes:

Standard Welding and Cutting Equipment

Automatic Equipment

Automated Cutting Equipment

Welding Consumables

Personal Protective Equipment (PPE)

Welding Accessories

By continuously improving and developing our products and manufacturing processes, we meet the challenges of technological advance in every sector and market we operate in. Delivering quality products and services remains at the heart of everything we do across all our global sales and product operations.

Contents



PERSONAL PROTECTION

Helmets, Masks and Screens	6-33
Respiratory Equipment	34-40
Lenses, Spectacles, Goggles and Visors	41-47
Hearing Protection	48
Hard Hats	48
Welding Curtains and Jackets	49
Welding Aprons and Coveralls	50
Other Welding Apparel	51-52
Clothing	53-57
Welding Gloves	58-62
Safety Footwear	63-66
Full Arrest Equipment	67-68



WELDING TOOLS & ACCESSORIES

Cables, Connectors and Electrode Holders	70-73
Clamps	73-75
Anti Spatter and Chemical Sundries	76-78
Chemical Sundries and Indicators	78-79
Chipping Hammers	80-81
Fillet Gauges	81-82
Small Tools	82-85
Cylinder Trolleys	86
Drying Equipment	87-96



SPECIAL PROCESS EQUIPMENT

Tungsten Grinders	98-100
Tungsten Electrodes	100-101
Arc Air Gouging Torches and Spares	102-105
Fume Extraction Units	106



Personal Protection

ESAB offer a comprehensive range of Personal Protection Equipment, covering everything from head to foot, for both welding and cutting and general engineering applications. All ESAB products conform to all relevant EU legislation and standards.

As Health and Safety Standards improve year on year, so does ESAB's commitment to providing a product portfolio capable of meeting the ever increasing demands of the markets we serve. As you would expect from a leading supplier of welding and cutting solutions, the ESAB product range is second to none for quality and reliability.

Helmets, Masks & Screens

EYE-TECH™ FAMILY

The Eye-Tech™ family consists of eight helmets that represent the professional range within welding helmets. All Eye-Techs are CE (EN379 and EN175), CSA, ANSI, AS/NZA and DIN approved. They all have cartridges powered by solar cells with battery back-up, and are both water proof and shock resistant. These helmets are ergonomically designed, counter balanced for comfort and fully adjustable. The Eye-Tech II can be combined with either Air160/190 respiratory units or with compressed air. The flame resistant head and face seal gives full protection for the scalp as well as to the face. The helmet and the air unit/regulator are connected via the standard Eye-Tech air hose (0468 127 011). Eye-Techs should not be used for laser welding.



EYE-TECH™ II 5-13

The Eye-Tech II 5-13 is suitable for almost all applications, MIG, MMA, and TIG welding, even on very low amperage arc welding, grinding, gas welding and plasma cutting. All adjustments, such as the shade setting, the sensitivity and the delay, are controlled on the satellite, found on the outside of the helmet shell. The grinding mode (DIN 4) can be easily activated from the outside.

Eye-Tech II 5-13	0700 000 907
Eye-Tech II 5-13 prepared for air*	0700 002 969
Eye-Tech II 5-13 + Air 160 8h	0700 002 973
Eye-Tech II 5-13 + Air 160 8h (UK)	0700 002 985
Eye-Tech II 5-13 + Air 190 8h	0700 002 977
Eye-Tech II 5-13 + Air 190 8h (UK)	0700 002 989
Eye-Tech II 5-13 + Air 190 5h	0700 002 981



EYE-TECH™ II 9-13

By setting the manual/auto switch to auto, the helmet will detect the intensity from the welding arc and set the shade accordingly. It is also possible to fine-tune the selected shade using the potentiometer. Alternatively, you can set the switch to manual and set the shade level yourself. As all the controls on the Eye-Tech II, 9-13 are on the outside of the helmet, you do not have to take the helmet off to set the sensitivity or the delay.

Eye-Tech II 9-13	0700 000 908
Eye-Tech II 9-13 prepared for air*	0700 002 970
Eye-Tech II 9-13 + Air 160 8h	0700 002 974
Eye-Tech II 9-13 + Air 160 8h (UK)	0700 002 986
Eye-Tech II 9-13 + Air 190 8h	0700 002 978
Eye-Tech II 9-13 + Air 190 8h (UK)	0700 002 990
Eye-Tech II 9-13 + Air 190 5h	0700 002 982

Helmets, Masks & Screens



EYE-TECH™ II 10-12

The 10-12 is an excellent helmet for people working in repair and maintenance as it provides shade cover for MMA and MIG welding at between 100-300 amps. The helmet can also be used for TIG welding at between 70-300 amps. The shade setting potentiometer has been put on the outside of the helmet from where it can be set even with a gloved hand.

Eye-Tech II 10-12	0700 000 909
Eye-Tech II 10-12 prepared for air*	0700 002 971
Eye-Tech II 10-12 + Air 160 8h	0700 002 975
Eye-Tech II 10-12 + Air 160 8h (UK)	0700 002 987
Eye-Tech II 10-12 + Air 190 8h	0700 002 979
Eye-Tech II 10-12 + Air 190 8h (UK)	0700 002 991
Eye-Tech II 10-12 + Air 190 5h	0700 002 983



EYE-TECH™ II 10/11

The entry level helmet in the Eye-Tech II range is the 10-11, a two shade helmet designed for MIG/MAG and MMA welding.

Eye-Tech II 10-11	0700 000 910
Eye-Tech II 10-11 prepared for air*	0700 002 972
Eye-Tech II 10-11 + Air 160 8h	0700 002 976
Eye-Tech II 10-11 + Air 160 8h (UK)	0700 002 988
Eye-Tech II 10-11 + Air 190 8h	0700 002 980
Eye-Tech II 10-11 + Air 190 8h (UK)	0700 002 992
Eye-Tech II 10-11 + Air 190 5h	0700 002 984

* These helmets are fully assembled and include an air duct, a face seal and a head seal.



If breathable compressed air is being used the Eye-Tech II for fresh air should be combined with:

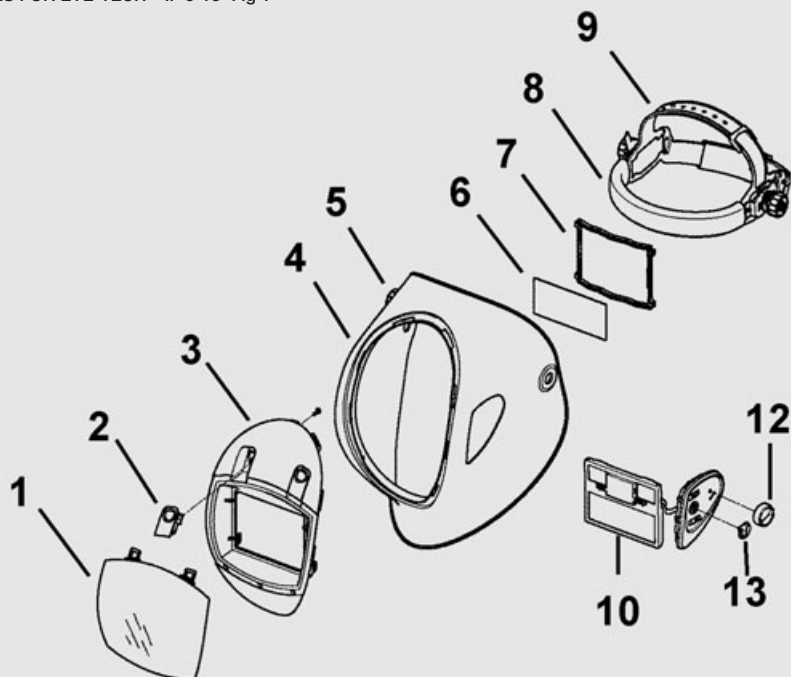
Air CA Regulator (see page 37)	0349 501 072
Air Supply Connector	0701 416 178
Air hose for Eye-Tech	0468 127 011

Helmets, Masks & Screens

SPARES FOR EYE-TECH™ II 5-13 (Fig 1)

1	Front cover lens Eye-Tech II	0700 000 059
2	Clip set for Eye-Tech II 5-13	0700 000 077
3	Adapter Eye-Tech II 5-13	0700 000 057
4	Eye-Tech II 5-13 without cartridge	0700 000 054
5	Excenter knob	0700 000 009
6	Inside cover lens Eye-Tech II	0700 000 061
7	Satellite fixing frame	0700 000 056
8	Sweat Band	0700 000 005
9	Headgear	0700 000 003
10	Cartridge Eye-Tech II 5-13	0700 000 055
12	Potentiometer knob	0700 000 037
13	Sensitivity adjustment	0700 000 038

SPARES FOR EYE-TECH™ II 5-13 Fig 1

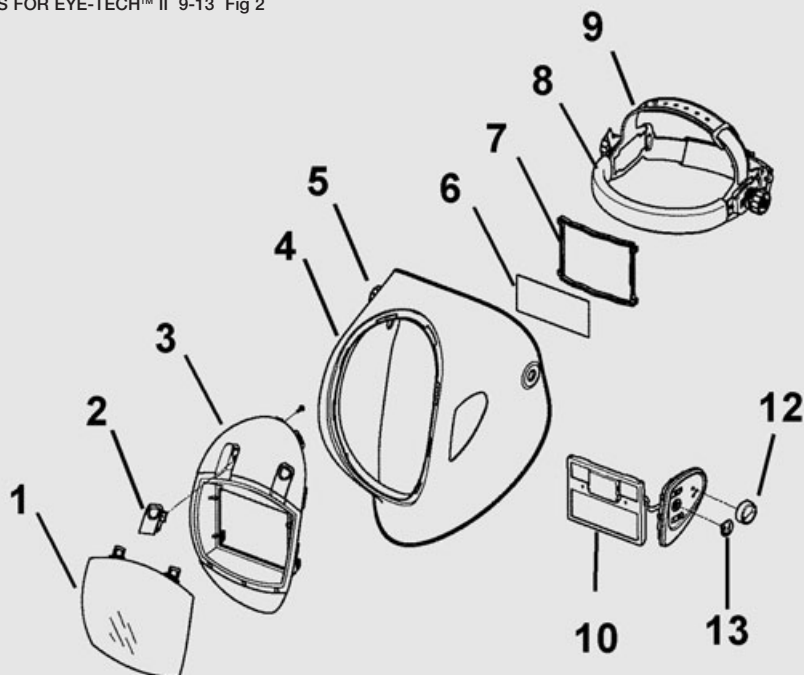


Helmets, Masks & Screens

SPARES FOR EYE-TECH™ II 9-13 (Fig 2)

1	Front cover lens Eye-Tech II	0700 000 059
2	Clip set yellow	0700 000 079
3	Adapter Eye-Tech II	0700 000 080
4	Eye-Tech II 9-13 without cartridge	0700 000 064
5	Excenter knob	0700 000 009
6	Inside cover lens Eye-Tech II	0700 000 061
7	Satellite fixing frame	0700 000 056
8	Sweat Band	0700 000 005
9	Headgear	0700 000 003
10	Cartridge Eye-Tech II 9-13	0700 000 065
12	Potentiometer knob Eye-Tech II 9-13	0700 000 067
13	Sensitivity adjustment	0700 000 038

SPARES FOR EYE-TECH™ II 9-13 Fig 2

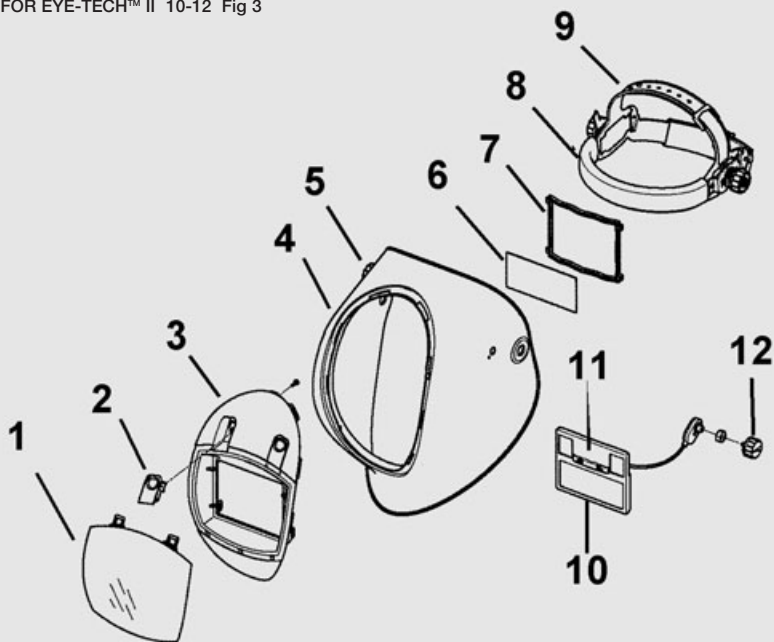


Helmets, Masks & Screens

SPARES FOR EYE-TECH™ II 10-12 (Fig 3)

1	Front cover lens Eye-Tech II	0700 000 059
2	Clip set yellow	0700 000 079
3	Adapter Eye-Tech II	0700 000 080
4	Eye-Tech II 10-12 without cartridge	0700 000 068
5	Excenter knob	0700 000 009
6	Inside cover lens Eye-Tech II	0700 000 061
7	Satellite fixing frame	0700 000 056
8	Sweat Band	0700 000 005
9	Head Band	0700 000 003
10	Cartridge Eye-Tech II 10-12	0700 000 069
11	Sensor bar Eye-Tech II	0700 000 070
12	Potentiometer knob Eye-Tech II	0700 000 071

SPARES FOR EYE-TECH™ II 10-12 Fig 3

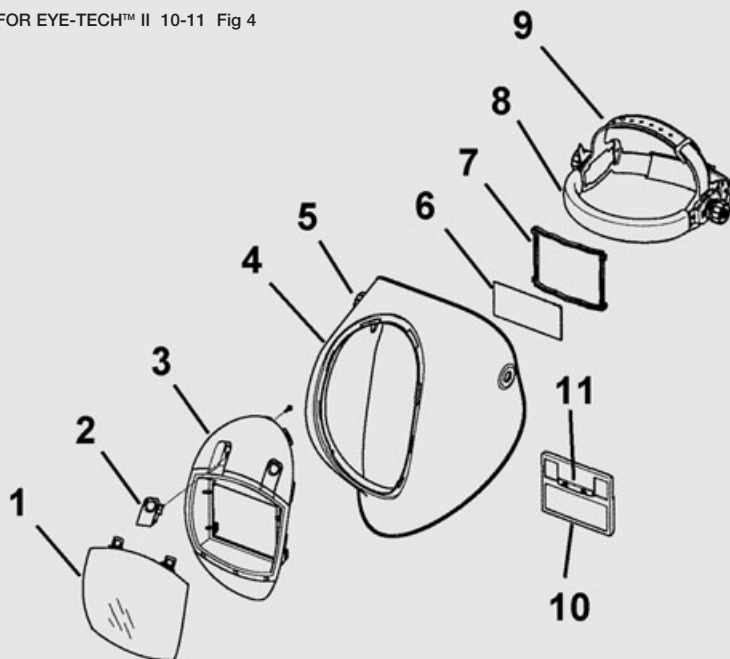


Helmets, Masks & Screens

SPARES FOR EYE-TECH™ II 10-11 (Fig 4)

1	Front cover lens Eye-Tech II	0700 000 059
2	Clip set yellow	0700 000 079
3	Adapter Eye-Tech II	0700 000 080
4	Eye-Tech II 10-11 without cartridge	0700 000 072
5	Excenter knob	0700 000 009
6	Inside cover lens Eye-Tech II	0700 000 061
7	Satellite fixing frame	0700 000 056
8	Sweat Band	0700 000 005
9	Head Band	0700 000 003
10	Cartridge Eye-Tech II 10-11	0700 000 073
11	Sensor bar Eye-Tech II	0700 000 070

SPARES FOR EYE-TECH™ II 10-11 Fig 4



Helmets, Masks & Screens

EYE-TECH™ II COMBINATIONS



EYE-TECH™ II WITH INTERNAL VISOR

The Eye -Tech II can be used with an air fed grade B impact protection grinding visor complete with a face and head seal. The grinding visor can be fitted to any of the standard Eye-Tech II helmets and can be combined with either the Air 160, Air 190 or compressed air respiratory systems. This would be the ideal system for all applications involved in welding fabrication. One head system for welding and grinding.

Eye-Tech II 5-13 with internal visor*	0700 000 916
Eye-Tech II 9-13 with internal visor*	0700 000 917
Eye-Tech II 10-12 with internal visor*	0700 000 918
Eye-Tech II 10-11 with internal visor*	0700 000 919

Spares for internal visor

Head seal for internal visor	0700 002 051
Face seal for internal visor	0700 002 052
Spare visor for internal visor	0700 002 053
Tear off visor for Eye-Tech internal visor	0700 002 054



EYE-TECH™ II WITH HARD HAT AND AIR SUPPLY

For environments where both head and respiratory protection are required the Eye-Tech II with hard hat and air supply is the ideal solution. The system consists of an Eye-Tech II helmet and a high quality hard hat with internal air duct. The system can be connected to either the Air 160/190 or breathable compressed air using the standard Eye-Tech air hose (0468 127 011).

Eye-Tech II 5-13 Air/Hard hat**	0700 000 920
Eye-Tech II 9-13 Air/Hard hat**	0700 000 921
Eye-Tech II 10-12 Air/Hard hat**	0700 000 922
Eye-Tech II 10-11 Air/Hard hat**	0700 000 923

Spares for hard hat and air supply

Head seal	0700 000 093
Face seal	0700 000 094
Hard hat with internal air duct	0700 000 097

Any of the above Eye-Tech II combinations can be used with any of the following Air units.

Air 160 complete	0700 002 926
Air 160 complete (UK)	0700 002 954
Air 190 AL complete 5h	0700 002 927
Air 190 AL complete 8h	0700 002 928
Air 190 AL complete 8h (UK)	0700 002 956
Air CA	0348 501 072

* These helmets are fully assembled and include an internal visor fitted with a head and face seal and an air duct.

** These helmets are fully assembled and include a hard hat with internal air duct, a head seal and face seal.

Helmets, Masks & Screens



EYE-TECH™ II WITH HARD HAT

By removing the head harness and replacing it with a hard hat adapter the Eye-Tech II can be fitted on to ESAB's protective helmet (0700 000 052). The combination is very well balanced and comfortable to wear. The Eye-Tech II helmet can be detached and reattached in a second. The specially designed hard hat meets the highest standard and it is equipped with ratchet adjustment.

Eye-Tech II 5-13	0700 000 907
Eye-Tech II 9-13	0700 000 908
Eye-Tech II 10-12	0700 000 909
Eye-Tech II 10-11	0700 000 910
Hard hat Eye-Tech	0700 000 052
Hard hat adapter Eye-Tech	0700 000 043

ACCESSORIES FOR EYE-TECH™ II



EYE-TECH™ II MAGNIFYING LENSES

The Eye-Tech II can be equipped with a magnifying lens. The magnifying lens is fitted from the inside (No adapter needed). There are four different diopters available, +1,0 / +1,5 / +2,0 / +2,5.

Diopter +1,0 Eye-Tech II	0700 000 084
Diopter +1,5 Eye-Tech II	0700 000 085
Diopter +2,0 Eye-Tech II	0700 000 086
Diopter +2,5 Eye-Tech II	0700 000 087



EYE-TECH™ II HEARING PROTECTION

Hearing protection with neck support is available for the Eye-Tech II. SNR rating = 26 dB.

Hearing protection with neck support	0700 001 880
--------------------------------------	--------------

ACCESSORIES FOR EYE-TECH™ II

Hard Hat Adapter	0700 000 043	Inside cover lens Shade 1,0	0700 000 074
Neck and chin protection	0700 000 047	Inside cover lens Shade 1,5	0700 000 075
Leather chest protection	0700 000 062	Inside cover lens Shade 2,0	0700 000 076
Leather head/neck protection	0700 000 063		

Helmets, Masks & Screens

EYE-TECH™



EYE-TECH™ 5-13

The ESAB Eye-Tech 5-13 offers unlimited personal settings. The latest LCD technology enables you to adjust the shade between DIN 5-9 and/or DIN 9-13. The 'grinding mode' (DIN 4) can easily be activated from the outside. The Eye-Tech 5-13 can be used in all welding applications including oxy/fuel gas welding.

Eye-Tech 5-13	0700 000 890
Eye-Tech 5-13 prepared for air*	0700 002 922
Eye-Tech 5-13 + Air 160 8h	0700 002 938
Eye-Tech 5-13 + Air 160 8h (UK)	0700 002 966
Eye-Tech 5-13 + Air 190 5h	0700 002 939
Eye-Tech 5-13 + Air 190 8h	0700 002 940
Eye-Tech 5-13 + Air 190 8h (UK)	0700 002 968
Eye-Tech 5-13 + Air CA	0700 002 906



EYE-TECH™ 9-13

The ESAB Eye-Tech 9-13 is equipped with step-less shade setting of between 9 and 13 and it can be adjusted from the outside during welding.

Eye-Tech 9-13	0700 000 880
Eye-Tech 9-13 prepared for air*	0700 002 923
Eye-Tech 9-13 + Air 160 8h	0700 002 929
Eye-Tech 9-13 + Air 160 8h (UK)	0700 002 957
Eye-Tech 9-13 + Air 190 5h	0700 002 930
Eye-Tech 9-13 + Air 190 8h	0700 002 931
Eye-Tech 9-13 + Air 190 8h (UK)	0700 002 959
Eye-Tech 9-13 + Air CA	0700 002 891

** These helmets are fully assembled and include an air duct, a face seal and a head seal.*

Helmets, Masks & Screens



EYE-TECH™ 10-12 SELECT

The ESAB Eye-Tech 10-12 Select has a switch on the inside of the helmet for easy adjustment between shade areas 10-11 and 11-12.

Eye-Tech 10-12 Select	0700 000 884
Eye-Tech 10-12 prepared for air*	0700 002 924
Eye-Tech 10-12 Select + Air 160 8h	0700 002 932
Eye-Tech 10-12 Select + Air 160 8h (UK)	0700 002 960
Eye-Tech 10-12 Select + Air 190 5h	0700 002 933
Eye-Tech 10-12 Select + Air 190 8h	0700 002 934
Eye-Tech 10-12 Select + Air 190 8h (UK)	0700 002 962
Eye-Tech 10-12 Select + Air CA	0700 002 894



EYE-TECH™ 10/11 MONO

The ESAB Eye-Tech 10/11 Mono has a switch on the inside of the helmet that gives you a fixed shade level of 10 or 11 during welding.

Eye-Tech 10/11 Mono	0700 000 888
Eye-Tech 10/11 prepared for air*	0700 002 925
Eye-Tech 10/11 Mono + Air 160 8h	0700 002 935
Eye-Tech 10/11 Mono + Air 160 8h (UK)	0700 002 963
Eye-Tech 10/11 Mono + Air 190 5h	0700 002 936
Eye-Tech 10/11 Mono + Air 190 8h	0700 002 937
Eye-Tech 10/11 Mono + Air 190 8h (UK)	0700 002 965
Eye-Tech 10/11 Mono + Air CA	0700 002 903

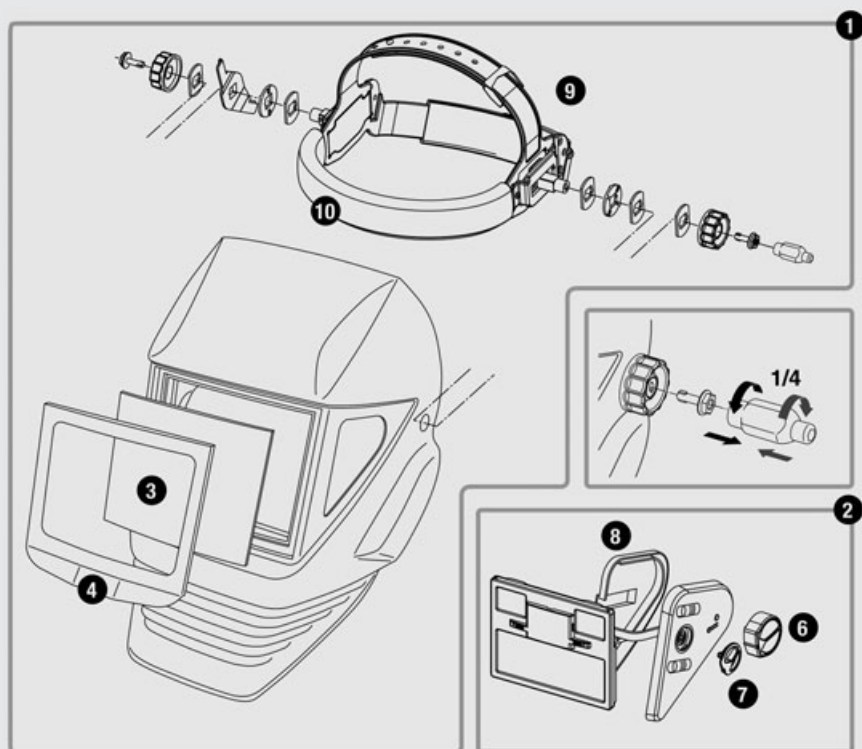
Helmets, Masks & Screens

SPARES FOR EYE-TECH 5-13 (Fig 5)

1	Helmet shell Eye-Tech 5-13	0700 000 034
2	Cartridge 5-13	0700 000 035
3	Front cover lens	0700 000 010
4	Front cover lens holder	0700 000 006
6	Potentiometer knob	0700 000 037
7	Sensitivity knob	0700 000 038
8	Satellite cover plate	0700 000 039
9	Headgear	0700 000 003
10	Sweatband	0700 000 005
*	Inside cover lens	0700 000 011

* Not shown

SPARES FOR EYE-TECH 5-13 Fig 5



Helmets, Masks & Screens

SPARES FOR EYE-TECH 9-13 (Fig 6)

1	Helmet shell Eye-Tech 9-13	0700 000 002
3	Front cover lens holder	0700 000 006
4	Front cover lens	0700 000 010
5	Inside cover lens	0700 000 011
6	Excenter knob	0700 000 009
9	Potentiometer knob	0700 000 007
10	Sensor bar	0700 000 008
11	Cartridge 9-13	0700 000 001
*	Headgear	0700 000 003
*	Sweatband	0700 000 005

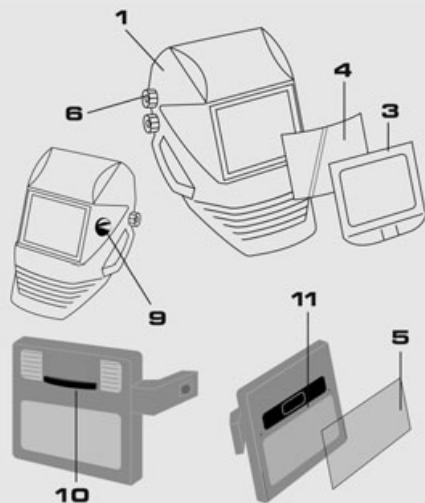
* Not shown

SPARES FOR EYE-TECH 10-12 (Fig 7)

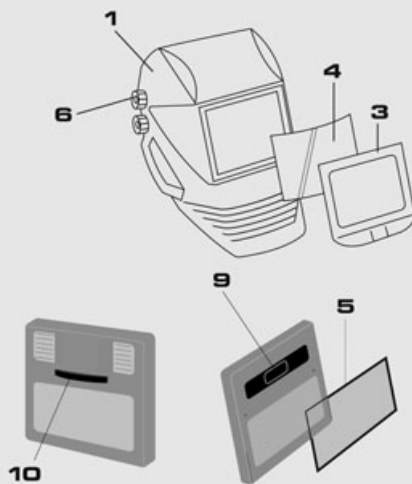
1	Helmet shell Eye-Tech 10-12	0700 000 002
3	Front cover lens holder	0700 000 006
4	Front cover lens	0700 000 010
5	Inside cover lens	0700 000 011
6	Excenter knob	0700 000 009
9	Cartridge 10-12	0700 000 022
10	Sensor bar	0700 000 008
*	Headgear	0700 000 003
*	Sweatband	0700 000 005

* Not shown

SPARES FOR EYE-TECH 9-13 Fig 6



SPARES FOR EYE-TECH 10-12 Fig 7



SPARES FOR EYE-TECH 10/11 (Fig 7)

1	Helmet shell Eye-Tech 10/11	0700 000 002
3	Front cover lens holder	0700 000 006
4	Front cover lens	0700 000 010
5	Inside cover lens	0700 000 011
6	Excenter knob	0700 000 009
9	Cartridge 10/11	0700 000 028
10	Sensor bar	0700 000 008
*	Headgear	0700 000 003
*	Sweatband	0700 000 005

* Not shown

Helmets, Masks & Screens

ACCESSORIES FOR EYE-TECH™



EYE-TECH™ MAGNIFYING LENSES

The Eye-Tech can be equipped with a magnifying lens. The magnifying lens is fitted from the inside, using the adapter (0700 000 030). There are four different diopters available, +1,0 / +1,5 / +2,0 / +2,5.

Diopter +1,0 Eye-Tech	0367 951 001
Diopter +1,5 Eye-Tech	0367 951 002
Diopter +2,0 Eye-Tech	0367 951 003
Diopter +2,5 Eye-Tech	0367 951 004
Adapter for diopter	0700 000 030



EYE-TECH™ HEARING PROTECTION

Hearing protection with neck support is available for the Eye-Tech. SNR rating = 26 dB.

Hearing protection with neck support	0700 001 880
--------------------------------------	---------------------

Hard Hat Adapter
Neck and chin protection
Leather chest protection
Leather head/neck protection

0700 000 043
0700 000 047
0700 000 062
0700 000 063

Inside cover lens Shade 2.0
Inside cover lens Shade 1.2
Inside cover lens Shade 0.8

0700 000 024
0700 000 025
0700 000 026

EYE-TECH™ COMBINATIONS



EYE-TECH™ WITH HARD HAT

By removing the head harness and replacing it with a hard hat adapter the Eye-Tech can be fitted on to ESAB's protective helmet (0700 000 052). The combination is very well balanced and comfortable to wear. The Eye-Tech helmet can be detached and reattached in a second. The specially designed hard hat meets the highest standard and it's equipped with ratchet adjustment.

Eye-Tech 5-13	0700 000 890
Eye-Tech 9-13	0700 000 880
Eye-Tech 10-12	0700 000 884
Eye-Tech 10/11	0700 000 888
Hard hat Eye-Tech	0700 000 052
Hard hat adapter Eye-Tech	0700 000 043

Helmets, Masks & Screens

AN EYE-TECH™ FOR ALL YOUR APPLICATIONS

It is important to select the right helmet for the application. The following selection table should be used as a guidance.

Amperage range	1.5	6	10	15	30	40	60	70	100	125	150	175	200	225	250	300	350	400	450	500	600			
MMA	8							9	10	11	12					13			14					
	Eye-Tech 5-13										Eye-Tech 9-13													
											Eye-Tech 10-12													
											Eye-Tech Mono 10/11													
MAG	8							9	10	11	12					13								
	Eye-Tech 5-13										Eye-Tech 9-13													
											Eye-Tech 10-12													
											Eye-Tech Mono 10/11													
TIG				8	9	10	11	12					13											
	Eye-Tech 5-13										Eye-Tech 9-13													
											Eye-Tech 10-12													
MIG heavy metals								9	10	11	12					13			14					
	Eye-Tech 5-13										Eye-Tech 9-13													
											Eye-Tech 10-12													
											Eye-Tech Mono 10/11													
MIG light metals										10	11	12	13	14										
Stainless, Al	Eye-Tech 5-13										Eye-Tech 9-13													
											Eye-Tech 10-12													
											Eye-Tech Mono 10/11													
Plasma cutting										10	11	12					13							
	Eye-Tech 5-13										Eye-Tech 9-13													
Micro plasma welding	4	5	6	7	8	9	10	11	12															
	Eye-Tech 5-13										Eye-Tech 9-13													
Amperage range	1.5	6	10	15	30	40	60	70	100	125	150	175	200	225	250	300	350	400	450	500	600			

This guide is applicable to both Eye-Tech and Eye-Tech II.

Helmets, Masks & Screens



Helmets, Masks & Screens



WELDEASY 913 HELMET AND SPARES

The WeldEasy automatic welding helmet is powered by solar cells. The stepless shade setting between DIN 9 and DIN 13 is controlled from the outside. **The helmet is suitable for MIG/MAG and MMA welding** and it conforms to the EN 379 standard for automatic welding lenses.

Weldeasy 9-13	0701 502 425
---------------	---------------------

Spares for WeldEasy 9-13

Weld easy 9-13 cartridge	0701 502 426
Helmet shell	0701 502 427
Sweat band	0701 502 428
Head gear	0701 502 429
Front and inside cover lens	0160 307 004



WELDEASY 913 WITH FRESH AIR

The WeldEasy can be combined with either the Air 160/190 respiratory units or compressed air.

Weldeasy 9-13 for fresh air*	0700 000 924
------------------------------	---------------------

Spares for the WeldEasy with fresh air

Head seal	0700 000 095
Face seal	0700 000 096

Combine with one of the Air units

Air 160 complete	0700 002 926
Air 160 complete (UK)	0700 002 954
Air 190 AL complete 5h	0700 002 927
Air 190 AL complete 8h	0700 002 928
Air 190 AL complete 8h (UK)	0700 002 956
Air CA	0349 501 072



ESAB RAMATIC

The ESAB Ramatic welding helmet is suitable for the occasional welder. It is a robust and easy to use helmet which is powered by two replaceable batteries. Once activated, DIN11 is set, allowing the helmet to be used for a wide range of MMA and MIG/MAG applications. The cartridge can be supplied separately and can be used with other passive helmets such as the ESAB Albatross 90 x 110.

ESAB Ramatic	0700 000 899
ESAB Ramatic cartridge	0700 000 044
Battery incl. lid	0700 000 046
Head gear	0366 833 882
Glass holder	0467 930 001
Ramatic helmet shell	0700 000 045
Front/inner cover lens	0160 307 004

* This helmet is fully assembled and includes head seal, face seal and air duct.

Helmets, Masks & Screens

ALBATROSS FAMILY

The Albatross series is a range of passive and very lightweight welding helmets. Albatross helmets provide a complete and flexible system, and can be fitted with hard hats, hearing protectors and fresh air units. The headgear is comfortable and adjustable and the helmets are delivered with chin protection. Approved to EN166 & EN175 and are all CE approved.



ALBATROSS 1000, 60 x 110 AND 90 x 110

The ESAB Albatross 1000 has a 'flip up' front in to which a welding glass is fitted. There is also a protective plastic lens that gives facial protection when the front is folded up. The Albatross Toughweld welding helmet is made of heat resistant polyester (up to 240 degrees Celsius), suitable for heavy duty welding. Welding glass 10 DIN included in all helmets.

Albatross 1000, 60 x 110 standard	0000 595 200
Albatross 1000, 60 x 110 for protective helmet (Peltor adapter 0368 975 883)	0000 595 205
Albatross 1000, 60 x 110 for protective helmet (FH66 aluminium adapter)	0000 595 201
Albatross 1000, 60 x 110 for fresh air	0000 595 202
Albatross 1000, 60 x 110 for protective helmet and fresh air	0000 595 203
Albatross Toughweld, 60 x 110 standard	0700 000 896
Albatross Toughweld, 60 x 110 fresh air	0700 000 898
Albatross 1000, 90 x 110 standard	0349 502 204
Albatross 1000, 90 x 110 for protective helmet	0349 502 205
Albatross 1000, 90 x 110 for fresh air	0349 502 206
Albatross 1000, 90 x 110 for protective helmet and fresh air	0349 502 207

ALBATROSS 2000

The inner protective lens on the Albatross 2000 is a shade 2. The specially designed 'flip up' front is equipped with a 60x110mm welding glass, however it is also possible to view the starting point of the weld through the viewing area. When the arc is struck the user can, by tilting the head, continue to see through the welding lens. Excellent when precision starting is essential. Welding glass 9 DIN included.

Albatross 2000 standard	0000 595 600
Albatross 2000 for protective helmet	0000 595 601
Albatross 2000 for fresh air	0000 595 602
Albatross 2000 for protective helmet and fresh air	0000 595 603

Helmets, Masks & Screens

ALBATROSS 3000

The Albatross 3000 is a combination of a welding helmet and a grinding visor. The large panoramic window gives an excellent overview and good protection whilst grinding. The welding visor can be supplied in different window sizes. Welding glass 10 DIN included.

Albatross 3000 standard	0349 502 200
Albatross 3000 for protective helmet	0349 502 201
Albatross 3000 for fresh air	0349 502 202
Albatross 3000 for protective helmet and fresh air	0349 502 203
Albatross 3000, 50 x 105	0349 502 208
Albatross 3000, 90 x 110	0349 502 212

ALBATROSS COMBINATIONS

Albatross 1000, incl Air 160 8h 60 x 110	0700 002 941
Albatross 1000, incl Air CA 60 x 110	0349 501 880
Albatross 1000, incl protective helmet 60 x 110	0349 501 889
Albatross 1000, incl protective helmet, hearing protectors 60 x 110	0349 501 888
Albatross 1000, incl protective helmet, Air 160 8h 60 x 110	0700 002 946
Albatross 1000, incl protective helmet, Air 160 8h, hearing protectors 60 x 110	0700 002 945
Albatross 1000, incl protective helmet, Air CA 60 x 110	0349 501 891
Albatross 1000, incl protective helmet, Air CA, hearing protectors 60 x 110	0349 501 890

Albatross 1000, incl Air 160 8h 90 x 110	0700 002 942
Albatross 1000, incl Air CA 90 x 110	0349 501 882
Albatross 1000, incl protective helmet 90 x 110	0349 501 895
Albatross 1000, incl protective helmet, hearing protectors 90 x 110	0349 501 894
Albatross 1000, incl protective helmet, Air 160 8h 90 x 110	0700 002 948
Albatross 1000, incl protective helmet, Air 160 8h, hearing protectors 90 x 110	0700 002 947
Albatross 1000, incl protective helmet, Air CA 90 x 110	0349 501 897
Albatross 1000, incl protective helmet, Air CA, hearing protectors 90 x 110	0349 501 896

Albatross 2000, incl Air 160 8h	0700 002 943
Albatross 2000, incl Air CA	0349 501 884
Albatross 2000, incl protective helmet	0349 501 901
Albatross 2000, incl protective helmet, hearing protectors	0349 501 900
Albatross 2000, incl protective helmet, Air 160 8h	0700 002 950
Albatross 2000, incl protective helmet, Air 160 8h, hearing protectors	0700 002 949
Albatross 2000, incl protective helmet, Air CA	0349 501 903
Albatross 2000, incl protective helmet, Air CA, hearing protectors	0349 501 902

Albatross 3000, incl Air 160 8h	0700 002 944
Albatross 3000, incl Air CA	0349 501 886
Albatross 3000, incl protective helmet	0349 501 907
Albatross 3000, incl protective helmet, hearing protectors	0349 501 906
Albatross 3000, incl protective helmet, Air 160 8h	0700 002 952
Albatross 3000, incl protective helmet, Air 160 8h, hearing protectors	0700 002 951
Albatross 3000, incl protective helmet, Air CA	0349 501 909
Albatross 3000, incl protective helmet, Air CA, hearing protectors	0349 501 908

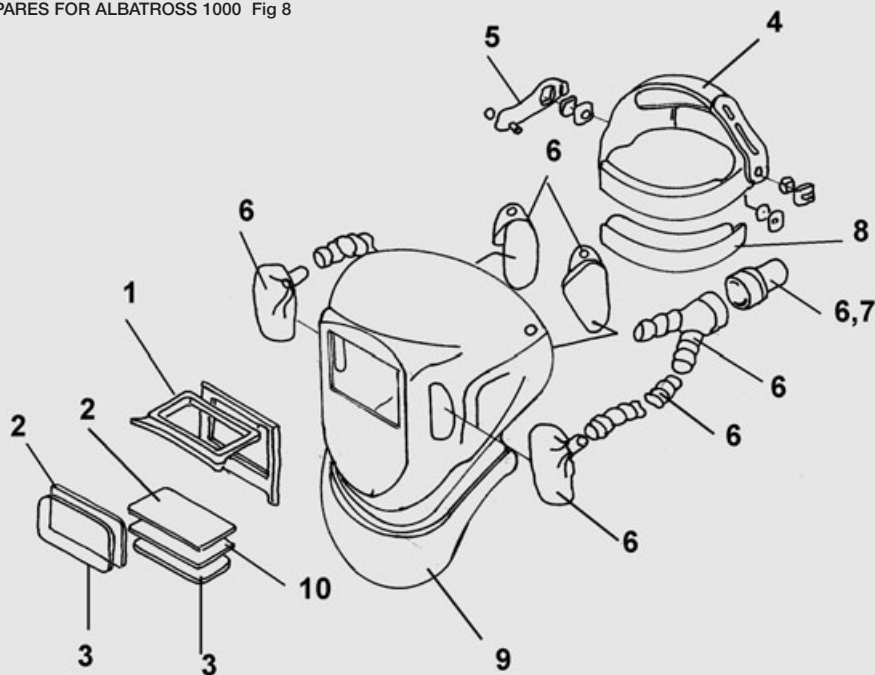
Helmets, Masks & Screens

SPARES FOR ALBATROSS 1000 (Fig 8)

1	Flip-up frame 60 x 110	0000 595 152
1	Flip-up frame 90 x 110	0349 501 084
2	Plastic cover lens 60 x 110	0160 307 001
2	Plastic cover lens 90 x 110	0160 307 004
3	Spring 60 x 110	0000 595 153
3	Spring 90 x 110	0000 595 383
4	Head gear	0000 500 519
5	Spare parts for head gear	0000 500 520
6	Air hose including adapter	0000 595 239
7	Adapter	0349 501 085
8	Air tight seal	0000 595 216
9	Face seal including bib	0000 595 178
10	Welding lens DIN 10, 60 x 110	0160 292 002
10	Welding lens DIN 10, 90 x 110	0760 031 632
*	Sweatband	0369 768 001

* Not shown

SPARES FOR ALBATROSS 1000 Fig 8



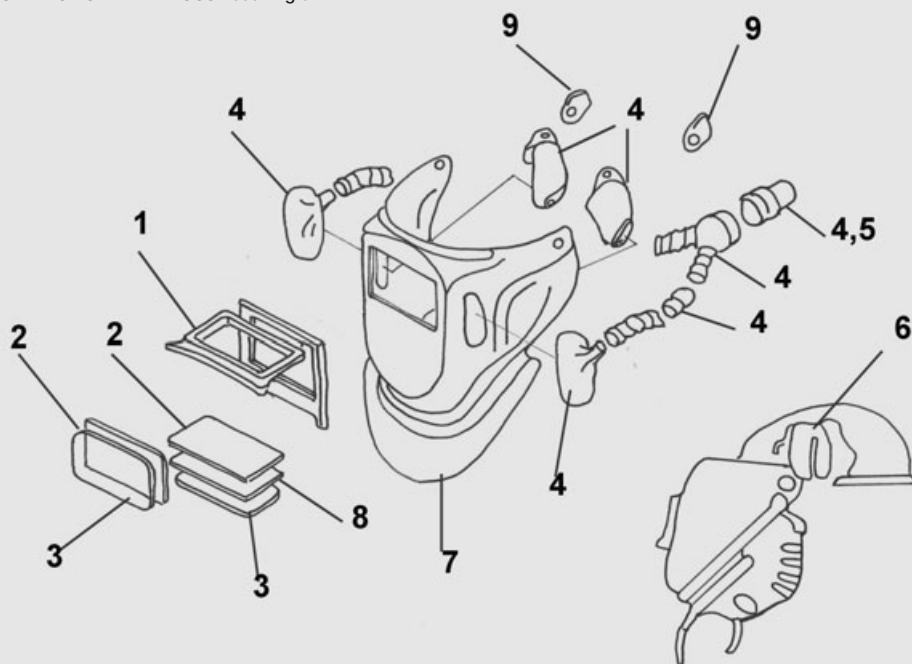
Helmets, Masks & Screens

SPARES FOR ALBATROSS 1000 (Fig 9)

1	Flip-up frame 60 x 110	0000 595 152
1	Flip-up frame 90 x 110	0349 501 084
2	Plastic cover lens 60 x 110	0160 307 001
2	Plastic cover lens 90 x 110	0160 307 004
3	Spring 60 x 110	0000 595 153
3	Spring 90 x 110	0000 595 383
4	Air hose including adapter	0000 595 239
5	Adapter	0349 501 085
6	Air tight seal	0000 595 216
7	Face seal including bib	0000 595 178
8	Welding lens DIN 10, 60 x 110	0160 292 002
8	Welding lens DIN 10, 90 x 110	0760 031 632
9	Helmet adapter	0000 595 252
*	Sweatband	0369 768 001

* Not shown

SPARES FOR ALBATROSS 1000 Fig 9



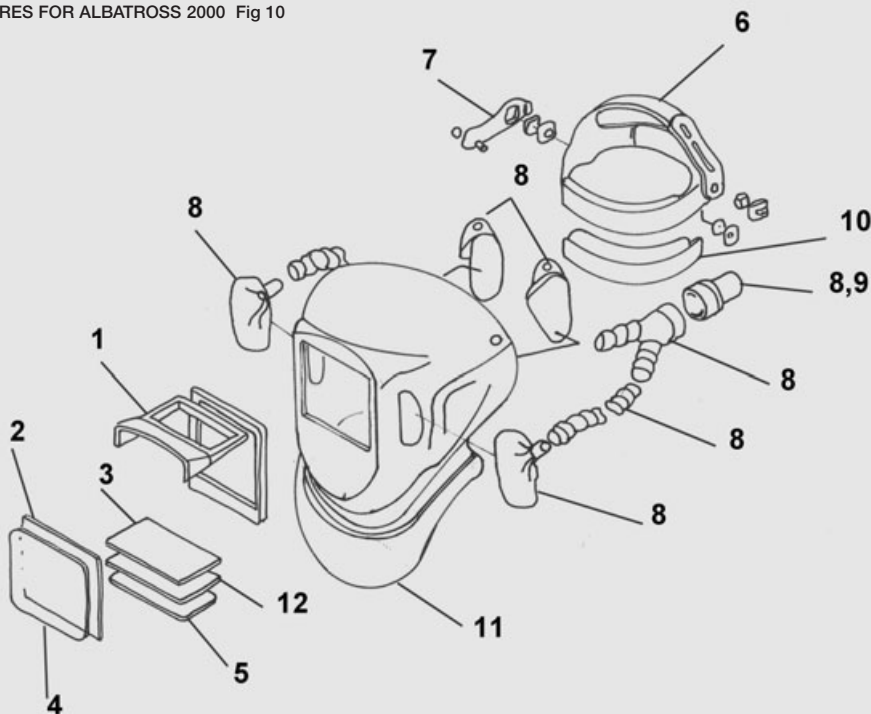
Helmets, Masks & Screens

SPARES FOR ALBATROSS 2000 (Fig 10)

1	Flip-up frame 60 x 110	0000 595 384
2	Protective lens DIN 2	0160 307 005
3	Plastic cover lens 60 x 110	0160 307 001
4	Spring 60 x 110	0000 595 153
5	Spring 90 x 110	0000 595 383
6	Head gear	0000 500 519
7	Spare parts for head gear	0000 500 520
8	Air hose including adapter	0000 595 239
9	Adapter	0349 501 085
10	Air tight seal	0000 595 216
11	Face seal including bib	0000 595 178
12	Welding lens DIN 10	0160 292 002
*	Sweatband	0369 768 001

* Not shown

SPARES FOR ALBATROSS 2000 Fig 10



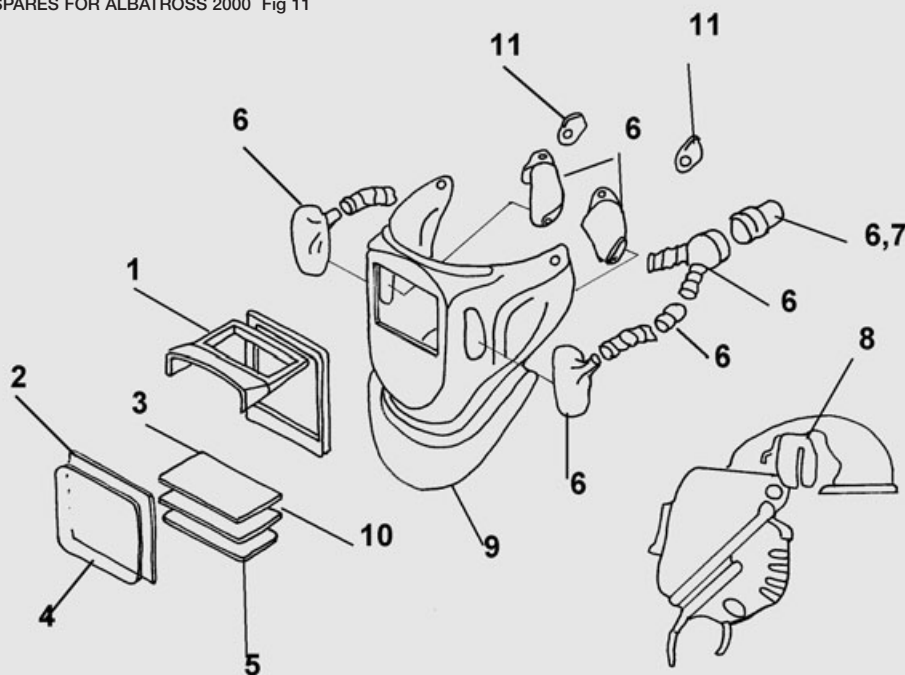
Helmets, Masks & Screens

SPARES FOR ALBATROSS 2000 (Fig 11)

1	Flip-up frame 60 x 110	0000 595 384
2	Protective lens DIN 2	0160 307 005
3	Plastic cover lens 60 x 110	0160 307 001
4	Spring 60 x 110	0000 595 153
5	Spring 90 x 110	0000 595 383
6	Air hose including adapter	0000 595 239
7	Adapter	0349 501 085
8	Air tight seal	0000 595 216
9	Face seal including bib	0000 595 178
10	Welding lens DIN 10	0160 292 002
11	Helmet adapter	0000 595 252
*	Sweatband	0369 768 001

* Not shown

SPARES FOR ALBATROSS 2000 Fig 11



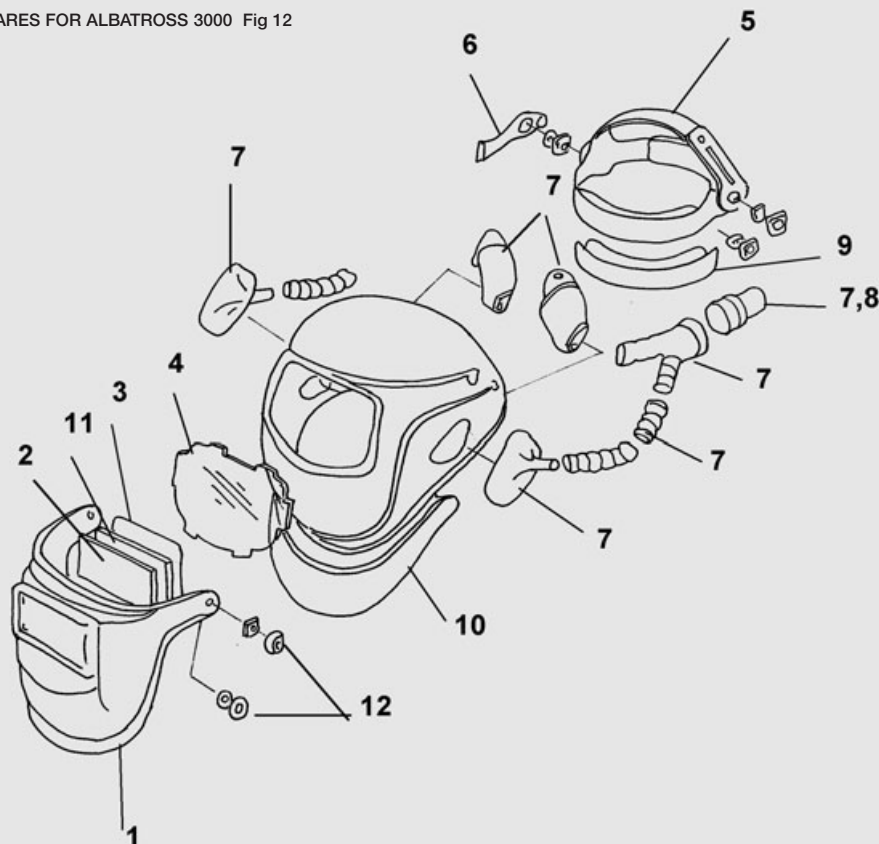
Helmets, Masks & Screens

SPARES FOR ALBATROSS 3000 (Fig 12)

1	Visor 60 x 110	0349 501 081
2	Plastic cover lens 60 x 110	0160 307 001
2	Plastic cover lens 90 x 110	0160 307 004
3	Spring 60 x 110	0000 595 153
4	Cover glass Albatross 3000	0349 501 082
5	Head gear	0000 500 519
6	Spare parts for head gear	0000 500 520
7	Air hose including adapter	0000 595 239
8	Adapter	0349 501 085
9	Air tight seal	0000 595 216
10	Face seal including bib	0000 595 178
11	Welding lens DIN 10	0160 292 002
12	Hinge set for visor	0700 000 048
*	Sweatband	0369 768 001

* Not shown

SPARES FOR ALBATROSS 3000 Fig 12



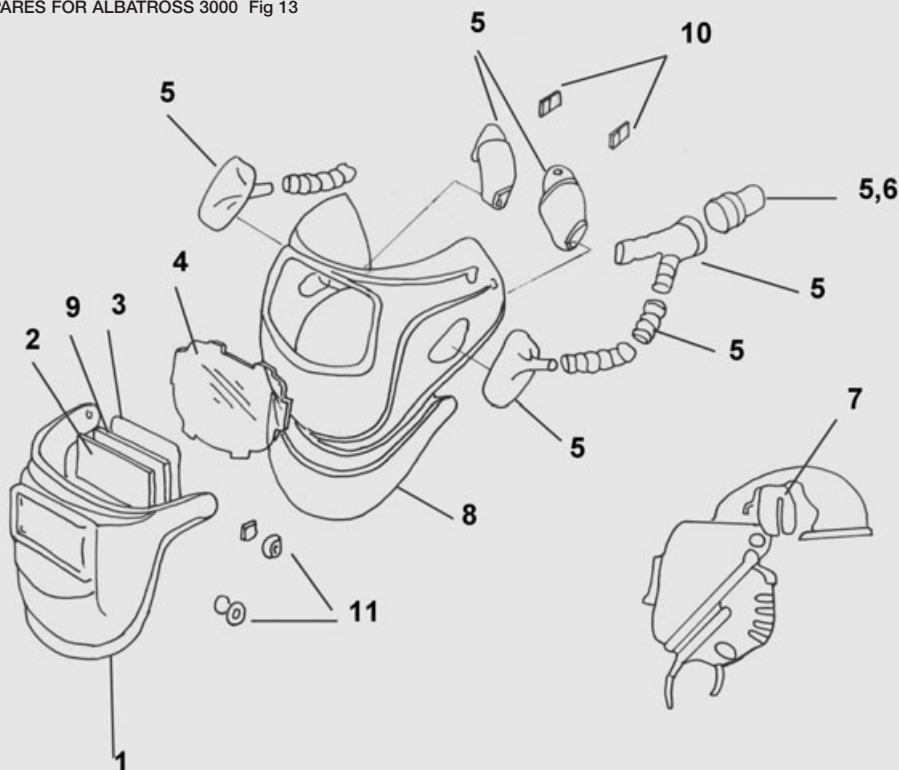
Helmets, Masks & Screens

SPARES FOR ALBATROSS 3000 (Fig 13)

1	Visor 60 x 110	0349 501 081
2	Plastic cover lens 60 x 110	0160 307 001
2	Plastic cover lens 90 x 110	0160 307 004
3	Spring 60 x 110	0000 595 153
4	Cover glass Albatross 3000	0349 501 082
5	Air hose including adapter	0000 595 239
6	Adapter	0349 501 085
7	Air tight seal	0000 595 216
8	Face seal including bib	0000 595 178
9	Welding lens DIN 10	0160 292 002
10	Helmet adapter	0000 595 252
11	Hinge set for visor	0700 000 048
*	Sweatband	0369 768 001

* Not shown

SPARES FOR ALBATROSS 3000 Fig 13



Helmets, Masks & Screens

SPARE PARTS FOR ALBATROSS 1000, 2000 and 3000

The Albatross helmets can be equipped with magnifying lenses, four different diopters are available, +1,0 / +1,5 / +2,0 / +2,5. The Albatross can be modified into a automatic helmet by fitting one of the automatic lenses which are available. The active shade provide DIN 10 and an additional DIN 2 shaded lens is supplied with the cartridge to make the total shade DIN 11.

Auto-shade 10-11 60 x 110	0700 000 029	Diopter +1,5	0367 951 002
Auto-shade 10-11 51 x 108	0700 000 032	Diopter +2,0	0367 951 003
Diopter +1,0	0367 951 001	Diopter +2,5	0367 951 004



EUROMASK

Euromask is a helmet for welding and cutting that provides effective protection from UV and IR radiation. The visor must always be down when welding. The large field of vision provides effective protection for the eyes when grinding. Euromask can be combined with various IR and UV protectors. Also available with a protective helmet or prepared for use with a fresh air unit.

Euromask DIN 10 1.7 + 8 DIN	0000 500 501
Euromask DIN 11 1.7 + 10 DIN	0000 500 500
Euromask with protective helmet DIN 10	0349 501 913
Euromask with protective helmet DIN 11	0349 501 912
Euromask for protective helmet DIN 10	0000 500 502
Euromask for protective helmet DIN 11	0000 500 503
Euromask DIN 10 prepared for air	0700 000 901
Euromask DIN 11 prepared for air	0700 000 902
Chin cover	0000 500 522
Visor DIN 5	0000 500 525
Visor DIN 8	0000 500 514
Visor Large DIN 8	0000 500 318
Visor DIN 10	0000 500 515
Visor large DIN 10	0349 501 088
UV protector clear (inner glass)	0000 500 526
UV protection DIN 1.7 (inner glass)	0000 500 512
UV protection DIN 3 (inner glass)	0000 500 513
UV protection DIN 5 (inner glass)	0000 500 524
Visor frame	0000 500 511
Head gear	0000 500 519
Spare part for head gear	0000 500 520
Hinge set for visor	0000 595 208



LEATHER MASK

This leather mask can be used when there is not enough space for welding with a conventional welding helmet. Glass size 90 x 110mm.

Leather mask	0000 593 221
--------------	---------------------

Helmets, Masks & Screens



MOON

Moon is an easy to use passive welding helmet suitable for the occasional welder. It is supplied with a DIN 10, 90 x 110mm welding lens.

Moon helmet, 90 x 110mm

0700 000 894



SF11 HELMET SHORT SHELL

A traditional short shell helmet made from high performance glass fibre. Weight 600g. Lens aperture 108 x 83mm (4 1/4" x 3 1/4").

SF11	0700 654 889
Rubber glass holder Pk 5	0701 380 163
Helmet head band foam Pk 10	0701 380 214
Lens retaining nut Pk 5	0701 386 154
Helmet head band foam Pk 10 (white)	0701 415 838



SF8 LIGHTWEIGHT HELMET

A lightweight thermoplastic helmet weighing 420g. Lens aperture 108 x 83mm (4 1/4" x 3 1/4").

SF8	0701 380 430
Rubber glass holder Pk 5	0701 380 163
Helmet head band foam Pk 10	0701 380 214
Lens retaining nut Pk 5	0701 386 154
Helmet head band foam Pk 10 (white)	0701 415 838



HAND SCREEN E

A safe welding screen with replaceable welding glass, 60 x 110mm.

Hand screen E

0332 109 880

Helmets, Masks & Screens



HAND SCREEN H

A safe welding screen that also protects the hand. Replaceable welding glass, size 60 x 110mm. Weight 330g.

Hand screen H with clear and coloured glass

0160 294 880



HAND SCREEN DELTA

Welding screen that protects the face as well as the hand. The window size is 90 x 110mm. Welding glass not included.

Hand screen Delta

0700 000 900



HAND SCREEN KURSAL

A basic fibre board hand screen with a window size of 98 x 75mm.

Kursal

0000 915 000



HAND SCREEN ECO

A basic fibre board hand screen with a window size of 98 x 75mm.

Eco

0000 915 001

Helmets, Masks & Screens



HAND SCREEN SF12

Deep shell fibre glass screen. Weighs 525g. Lens aperture 108 x 83mm (4 $\frac{1}{4}$ " x 3 $\frac{1}{4}$ ").

SF12

0700 654 890



HAND SCREEN SF2

Flat fronted fibreglass hand screen. Weight 450g. Lens aperture 108 x 83mm (4 $\frac{1}{4}$ " x 3 $\frac{1}{4}$ ").

SF2

0700 655 002

Respiratory Equipment

ESAB AIR

ESAB always recommend the use of a full respiratory system for maximum protection against welding fume. For the ultimate protection and for use in the most aggressive of welding environments, ESAB offer the Air 160 and Air 190 powered respiratory systems.



ESAB AIR 160

The ESAB respiratory systems have been upgraded to increase the levels of comfort and safety for the welder. The Air 160 provides 160 litres of air per minute to give a more pleasant working environment. The unit only weighs 1kg but will still withstand the toughest of environments. The unit is supplied with a P3 filter with an extraordinary filtration capacity. The battery, which has an operating capacity of 8 hours, can be charged separate from the motor unit, hence it can be utilised when working double shifts. The Air 160 can be used together with the Eye-Tech, the Albatross helmet, or the Weldeasy helmet.

The ESAB Air 160-8H Complete includes motor unit, 8 hour battery, charger, belt, comfort pad, one P3 filter and one pre-filter fitted.

Air 160 - 8h complete	0700 002 929
Air 160 - 8h complete, UK plug	0700 002 954

AIR UNITS - AIR 160 WITH EYE-TECH™ II AND EYE-TECH™

Eye-Tech II 5-13 + Air 160	0700 002 973	Eye-Tech 9-13 + Air 160	0700 002 929
Eye-Tech II 5-13 + Air 160 (UK)	0700 002 985	Eye-Tech 9-13 + Air 160 (UK)	0700 002 957
Eye-Tech II 9-13 + Air 160	0700 002 974	Eye-Tech 10-12 + Air 160	0700 002 932
Eye-Tech II 9-13 + Air 160 (UK)	0700 002 986	Eye-Tech 10-12 Select + Air 160 (UK)	0700 002 960
Eye-Tech II 10-12 + Air 160	0700 002 975	Eye-Tech 10/11 + Air 160	0700 002 935
Eye-Tech II 10-12 + Air 160 (UK)	0700 002 987	Eye-Tech 10/11 Mono + Air 160 (UK)	0700 002 963
Eye-Tech II 10/11 + Air 160	0700 002 976	Eye-Tech 5-13 + Air 160	0700 002 938
Eye-Tech II 10/11 + Air 160 (UK)	0700 002 988	Eye-Tech 5-13 + Air 160 (UK)	0700 002 966

AIR UNITS - AIR 160 WITH ALBATROSS

Albatross 1000, 60x110 + Air 160	0700 002 941
Albatross 1000, 90x110 + Air 160	0700 002 942
Albatross 2000 + Air 160	0700 002 943
Albatross 3000 + Air 160	0700 002 944
Albatross 1000 60x110 + G2000c + Air 160 + ear prot.	0700 002 945
Albatross 1000 60x110 + G2000c + Air 160	0700 002 946
Albatross 1000 90x110 + G2000c + Air 160 + ear prot.	0700 002 947
Albatross 1000 90x110 + G2000c + Air 160	0700 002 948
Albatross 2000 + G2000c + Air 160 + ear prot.	0700 002 949
Albatross 2000 + G2000c + Air 160	0700 002 950
Albatross 3000 60x110 + G2000c + Air 160 + ear prot.	0700 002 951
Albatross 3000 60x110 + G2000c + Air 160	0700 002 952

Respiratory Equipment



ESAB AIR 190

The ESAB respiratory systems have been upgraded to increase the comfort and safety for the welder. The Air 190 provides 190 litres of air per minute to give a more pleasant working environment. The Air 190 is equipped with an audible and a visible alarm that indicates when the filter is blocked and/or when the battery capacity is running low. When using the large battery the operation time is 8 hours and the battery can be charged separate from the motor unit, hence it can be utilised when working double shifts. The unit is supplied with a P3 filter with an extraordinary filtration capacity.

The ESAB Air 190-5H Complete includes motor unit, 5 hour battery, charger, belt, comfort pad, one P3 filter and one pre-filter fitted.

The ESAB Air 190-8H Complete includes motor unit, 8 hour battery, charger, belt, comfort pad, one P3 filter and one pre-filter fitted.

Air 190 - 8h complete	0700 002 928
Air 190 - 8h complete, UK plug	0700 002 956
Air 190 - 5h complete	0700 002 927

AIR UNITS - AIR 190 WITH EYE-TECH™ II AND EYE-TECH™

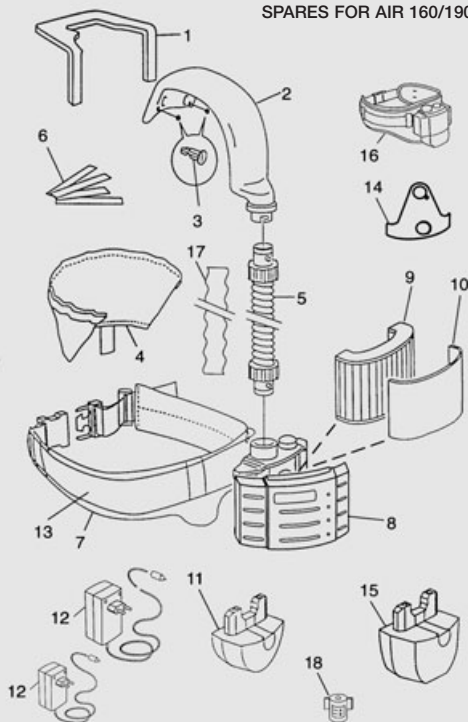
Eye-Tech II 5-13 8h + Air 190	0700 002 977
Eye-Tech II 5-13 8h + Air 190 (UK)	0700 002 989
Eye-Tech II 5-13 5h + Air 190	0700 002 981
Eye-Tech II 9-13 8h + Air 190	0700 002 978
Eye-Tech II 9-13 8h + Air 190 (UK)	0700 002 990
Eye-Tech II 9-13 5h + Air 190	0700 002 982
Eye-Tech II 10-12 8h + Air 190	0700 002 979
Eye-Tech II 10-12 8h + Air 190 (UK)	0700 002 991
Eye-Tech II 10-12 5h + Air 190	0700 002 983
Eye-Tech II 10/11 8h + Air 190	0700 002 980
Eye-Tech II 10/11 8h + Air 190 (UK)	0700 002 992
Eye-Tech II 10/11 5h + Air 190	0700 002 984
Eye-Tech 9-13 + Air 190 - 5h	0700 002 930
Eye-Tech 9-13 + Air 190 - 8h	0700 002 931
Eye-Tech 9-13 + Air 190 8h (UK)	0700 002 959
Eye-Tech 10-12 + Air 190 - 5h	0700 002 933
Eye-Tech 10-12 + Air 190 - 8h	0700 002 934
Eye-Tech 10-12 Select + Air 190 8h (UK)	0700 002 962
Eye-Tech 10/11 + Air 190 - 5h	0700 002 936
Eye-Tech 10/11 + Air 190 - 8h	0700 002 937
Eye-Tech 10/11 Mono + Air 190 8h (UK)	0700 002 965
Eye-Tech 5-13 + Air 190 AL - 5h	0700 002 939
Eye-Tech 5-13 + Air 190 AL - 8h	0700 002 940
Eye-Tech 5-13 + Air 190 8h (UK)	0700 002 968

Respiratory Equipment

SPARES FOR AIR 160/190 (Fig 14)

1	Head seal Eye-Tech	0700 002 012	10	Carbon Pre filter Pk 10	0700 002 040
1	Head seal Eye-Tech II	0700 002 048	11	Battery small	0700 002 013
1	Head seal WeldEasy	0700 000 095	12	Battery charger small 2 Pin (Europe)	0700 002 020
2	Air channel Eye-Tech & WeldEasy	0700 002 002	12	Battery charger small 3 Pin (UK)	0700 002 044
2	Air channel Eye-Tech II	0700 002 050	12	Battery charger large 2 Pin (Europe)	0700 002 031
3	Screws for air channel Pk 2	0700 002 028	12	Battery charger large 3 Pin (UK)	0700 002 045
4	Face seal Eye-Tech	0700 002 019	12	Intelligent charger	0701 416 203
4	Face seal Eye-Tech II	0700 002 049	12	Five way intelligent charger	0701 416 136
4	Face seal WeldEasy	0700 000 096	13	Waist belt	0700 002 027
5	Air hose Albatross	0700 002 032	14	Holder for air channel	0700 002 029
5	Air hose Eye-Tech	0468 127 011	15	Battery large	0700 002 014
6	Velcro set (Eye-Tech only)	0700 002 015	16	Air 160 Complete	0700 002 926
7	Comfort pad standard	0700 002 021	16	Air 160 Complete (UK)	0700 002 954
7	Comfort pad large	0700 002 022	16	Air 190 - 5h Complete	0700 002 927
8	Air 160 motor unit	0700 002 042	16	Air 190 - 8h Complete	0700 002 928
8	Air 190 AL motor unit	0700 002 043	16	Air 190 - 8h Complete (UK)	0700 002 956
9	P3 filter	0700 002 024	17	Proban hose cover	0349 501 071
9	P2 filter	0700 002 018	18	Air flow indicator	0468 127 004
9	Carbon P2 filter	0700 002 041		Back plate (not shown)	0701 502 396
10	Pre filter Pk 5	0700 002 023			

SPARES FOR AIR 160/190 Fig 14



Mounting kit Eye-Tech 0700 002 030
(Face seal, velcro, head seal, air channel)
Mounting kit Eye-Tech II 0700 002 047
(Face seal, velcro, head seal, air channel)

Respiratory Equipment

ESAB COMPRESSED AIR SYSTEM (CA)

A complete compressed air system consists of a waist mounted air regulator, a 10 metre connecting air line, air supply connector and headpiece. Clean, breathing quality compressed air, is supplied via the 10 metre hose to the pre-set belt regulator.



REGULATOR

The waist mounted regulator is pre-set to reduce the air from high to low pressure and has integral low flow warning alarm. The unit is encased to protect the regulator. When using the regulator in combination with Eye-Tech or a grinding/spraying helmet, an air adapter is required to fit the air hose to the regulator. The unit is supplied complete with a waist belt. The maximum input working pressure is 10 bar (145 psi).

Air CA regulator	0349 501 072
Air supply connector	0701 416 178
Airline 10 meter	0701 416 188



ESAB AIR CA FILTRATION BANK

The filter system consists of three filtration units which will remove liquids, solid contaminants, oil vapour and odours from the compressed air supply and provides clean breathing air to the operators. The filtration bank should be used when a clean air supply is not available. The units are fitted with a 1/4" (6,4 mm) input hose tail adapter, a 0,5-10 bar adjustable regulator, twin output 'quick-snap' style hose connectors for 1 or 2 operators and a gauge as a guide to output pressure. The filtration bank can be supplied for wall mounting or on a portable frame.

Filtration bank framed	0701 416 183
Filtration bank wall mounted	0701 416 184

Spare filters for filtration bank

Prefilter	0701 416 185
Coalescing filter	0701 416 186
Charcoal filter	0701 416 187

Respiratory Equipment



GRINDING AND SPRAYING HELMET FOR AIR 160/190/CA

The system consists of a hard hat combined with a flip up polycarbonate visor. Air is fed into the headpiece via an air hose from the compressed air regulator. This helmet can also be used with Air 160/190 units. ESAB offer visor covers to protect and increase the life of the visor.

Grinding/spraying helmet incl. Hose	0701 416 189
-------------------------------------	--------------

Spares for internal visor

Replacement visor clear	0701 416 233
Replacement visor DIN 5 green	0701 500 000
Visor covers	0701 416 182
Face seal	0701 416 234
Hearing protection	0701 416 200
Brow guard & arms	0700 002 050



GRINDING VISOR FOR AIR 160/190/CA

Filtered air is ducted from the Power Unit or Regulator up a spiral reinforced PVC hose, and into an air channel. The air is directed into the top of the visor area maximising anti misting around the breathing zone. The visor can be combined with either Air 160/190 or compressed air.

Air fed grinding visor	0700 002 915
------------------------	--------------

Respiratory Equipment



BA SYSTEM

The BA system can be used in combination with the Eye-Tech helmet and hard hat. The Full Face Mask Fresh Air System can be used either as unpowered (Negative pressure), where the air is drawn through the system by the normal breathing of the user, or as a Powered system where air is supplied by connecting a Martindale Mini turbine to the end of the air supply hose. The choice of which system to use is left to the user. Normally if the system is likely to be used for any significant period of time (i.e. over an hour) then the powered option is preferable in terms of comfort to the user. The unpowered system should be used if there is no power available for the turbine or if the atmosphere where the turbine is to be sited does not permit the use of electrical equipment (for example a potentially explosive atmosphere). Both systems conform to the higher specification of EN 138, namely Fresh air BA EN 138 class 2. The system with class 2 hoses offers a Nominal protection factor of 2000 as defined in EN 138. Suitable applications are potentially oxygen deficient atmospheres, eg. welding in a confined space (tanks, silos, vats, pits).

Unpowered Fresh-Air hose system	0701 502 440
Powered or Unpowered Fresh-Air hose system	0701 502 441
Mini Turbine powered Fresh-Air System	0701 502 442

Spares for BA system

Full-Face mask	0701 502 443
Full-Face mask with Twin air Hose	0701 502 444
Full-Face mask with Twin air Hose and overflow valve	0701 502 445
Twin hose with overflow valve	0701 502 446
Twin hose	0701 502 447
9 meter hose assy	0701 502 448
10 meter hose assy	0701 502 449
20 meter hose assy	0701 502 450
30 meter hose assy	0701 502 451
40 meter hose assy	0701 502 452
Mini Turbine 110v	0701 502 453
Mini Turbine 240v	0701 502 454
Belt with Hose connector	0701 502 455
Replacement flame retardant 1.5m belt	0701 502 456
Strainer and anchor pin assy	0701 502 457
Storage case (Plastic)	0701 502 458
Mask Wipes	0701 502 459
Replacement full face mask visor	0701 502 460
Full face mask visor protector	0701 502 461
Replacement Full-face mask valve set	0701 502 462
Replacement O Rings for hoses	0701 502 463
Replacement foam filter for mini turbine	0701 502 464
Adapter	0701 502 465

Respiratory Equipment



DISPOSABLE MASKS

Our range of disposable masks are high quality filtering face masks, which give maximum filtration efficiency and minimum breathing resistance for the wearers comfort. All models have a fully adjustable nose clip for optimum fit and the headbands are latex free to minimise any allergic reaction. The DMV2, DMV2C and DMV3 are all equipped with exhalation valves to reduce heat and humidity. The DMV2C offers nuisance relief against ozone gas and welding fumes generated by welding operations e.g. MIG, MAG, TIG, MMA, Flux Core, Arc Gouging. The range of disposable masks meet the requirements of EN149:2001 and are CE marked in accordance with the requirements of European Directive 89/686/EEC.

	0701 416 021 DMNV1 FFP1 None valved	0701 416 025 DMV2 FFP2 Valved	0701 416 027 DMV2C FFP2 Valved	0701 416 028 DMV3 FFP3 Valved
Dust	X	X	X	X
Dust/Mist	X	X	X	X
Metal fume			X	
Oil based particulates	X	X	X	X
High concentration particulates		X	X	X
Acid gas nuisance			X	
Odour nuisance			X	
Weld fume			X	
Ozone nuisance			X	

Lenses, Spectacles, Goggles & Visors



FILTER LENSES

Traditional glass filter lenses of excellent UV and IR protection and thermal stability. Solid glass lenses must be used with a polycarbonate backing lens and a glass or plastic cover lens.

Filter Lens 98 x 75 shade 9 Pk 25	0000 915 059
Filter Lens 98 x 75 shade 10 Pk 25	0000 904 305
Filter Lens 98 x 75 shade 11 Pk 25	0000 915 060
Filter Lens 98 x 75 shade 12 Pk 25	0000 915 061
Filter Lens 98 x 75 shade 13 Pk 25	0000 915 062

Filter Lens 60 x 110 shade 9 Pk 25	0160 292 001
Filter Lens 60 x 110 shade 10 Pk 25	0160 292 002
Filter Lens 60 x 110 shade 11 Pk 25	0160 292 003
Filter Lens 60 x 110 shade 12 Pk 25	0160 292 004
Filter Lens 60 x 110 shade 13 Pk 25	0160 292 005

Filter Lens 90 x 110 shade 9 Pk 25	0760 031 631
Filter Lens 90 x 110 shade 10 Pk 25	0760 031 632
Filter Lens 90 x 110 shade 11 Pk 25	0760 031 633
Filter Lens 90 x 110 shade 12 Pk 25	0760 031 634
Filter Lens 90 x 110 shade 13 Pk 25	0760 031 635

Filter Lens 50 x 105 shade 9 Pk 25	0590 028 216
Filter Lens 50 x 105 shade 10 Pk 25	0590 028 217
Filter Lens 50 x 105 shade 11 Pk 25	0590 028 218
Filter Lens 50 x 105 shade 12 Pk 25	0590 028 219
Filter Lens 50 x 105 shade 13 Pk 25	0590 028 220

Filter Lens 51 x 108 shade 9 Pk 25	0760 031 601
Filter Lens 51 x 108 shade 10 Pk 25	0760 031 602
Filter Lens 51 x 108 shade 11 Pk 25	0760 031 603
Filter Lens 51 x 108 shade 12 Pk 25	0760 031 604
Filter Lens 51 x 108 shade 13 Pk 25	0760 031 605

Filter Lens 50mm Diameter Shade 4 Pk 25	0000 665 604
Filter Lens 50mm Diameter Shade 5 Pk 25	0000 665 605
Filter Lens 50mm Diameter Shade 6 Pk 25	0000 665 606

Filter Lens 8EW 108 x 83 (4 1/4" x 3 1/4") Pk 10	0701 416 367
Filter Lens 9EW 108 x 83 (4 1/4" x 3 1/4") Pk 10	0701 416 369
Filter Lens 10EW 108 x 83 (4 1/4" x 3 1/4") Pk 10	0701 416 371
Filter Lens 11EW 108 x 83 (4 1/4" x 3 1/4") Pk 10	0701 416 373
Filter Lens 12EW 108 x 83 (4 1/4" x 3 1/4") Pk 10	0701 416 375
Filter Lens 13EW 108 x 83 (4 1/4" x 3 1/4") Pk 10	0701 416 376

Lenses, Spectacles, Goggles & Visors



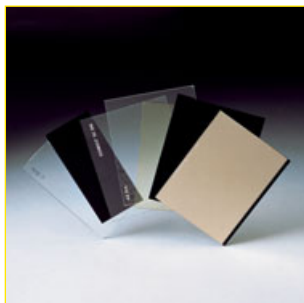
LAMINATED FILTER LENSES

Laminated solid glass lenses have all the benefits of traditional glass, but are also robust. Laminated lenses can be used with a standard glass or plastic cover lenses and do not need a backing plate. They have excellent thermal stability and are particularly suitable for high amperage and over head work.

Filter Lens Lam 9EW 108 x 51 (4 1/4" x 2") Pk 2	0701 413 193
Filter Lens Lam 10EW 108 x 51 (4 1/4" x 2") Pk 2	0701 413 194
Filter Lens Lam 11EW 108 x 51 (4 1/4" x 2") Pk 2	0701 413 195
Filter Lens Lam 12EW 108 x 51 (4 1/4" x 2") Pk 2	0701 413 196
Filter Lens Lam 13EW 108 x 51 (4 1/4" x 2") Pk 2	0701 413 197

Filter Lens Lam 9EW 108 x 83 (4 1/4" x 3 1/4") Pk 2	0701 413 994
Filter Lens Lam 10EW 108 x 83 (4 1/4" x 3 1/4") Pk 2	0701 413 995
Filter Lens Lam 11EW 108 x 83 (4 1/4" x 3 1/4") Pk 2	0701 413 210
Filter Lens Lam 12EW 108 x 83 (4 1/4" x 3 1/4") Pk 2	0701 413 996
Filter Lens Lam 13EW 108 x 83 (4 1/4" x 3 1/4") Pk 2	0701 413 997

Filter Lens Lam 3GWF 50mm Pk 2	0701 414 020
Filter Lens Lam 4GWF 50mm Pk 2	0701 414 021
Filter Lens Lam 5GWF 50mm Pk 2	0701 414 022
Filter Lens Lam 6GWF 50mm Pk 2	0701 414 023

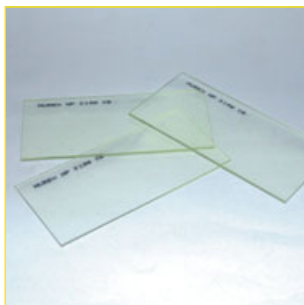


COVER LENSES

All filters must use a suitable cover lens to protect the filter lens from spatter and damage.

Cover Lens 98 x 75 glass Pk 100	0000 915 058
Cover Lens 98 x 75 plastic Pk 100	0000 915 097
Cover Lens 60 x 110 glass Pk 25	0291 102 701
Cover Lens 60 x 110 plastic Pk 100	0160 307 001
Cover Lens 90 x 110 glass Pk 100	0760 031 040
Cover Lens 90 x 110 plastic Pk 100	0160 307 004
Cover Lens 51 x 108 (4 1/4" x 2") glass Pk 25	0760 031 010
Cover Lens 51 x 108 (4 1/4" x 2") plastic Pk 100	0160 307 002
Cover Lens 50 x 105 glass Pk 100	0590 028 221
Cover Lens 50 x 105 plastic Pk 100	0590 028 222
Cover Lens Diameter 50mm glass Pk 50	0000 665 600
Cover Lens Diameter 50mm plastic Pk 50	0000 665 618
Cover Lens CR39 108 x 83 (4 1/4" x 3 1/4") Pk 10	0701 416 350
Cover Lens CR39 108 x 83 (4 1/4" x 3 1/4") Pk 100	0701 416 351
Cover Lens Glass 108 x 83 (4 1/4" x 3 1/4") Pk 10	0701 416 341
Cover Lens Lam 108 x 51 (4 1/4" x 2") Pk 2	0701 413 198
Cover Lens Lam 108 x 83 (4 1/4" x 3 1/4") Pk 2	0701 413 211

Lenses, Spectacles, Goggles & Visors



POLYCARBONATE BACKING LENSES

When using non-robust filter lenses it is necessary to fit a suitable robust backing lens to protect the welder's eyes. Polycarbonate backing lenses provide this protection.

Back Lens	108 x 51 (4 1/4" x 2")	Pk 10	0701 416 330
Back Lens	108 x 83 (4 1/4" x 3 1/4")	Pk 10	0701 416 332
Back Lens	60 x 110	Pk 10	0701 416 334
Back Lens	90 x 110	Pk 10	0701 416 336

FILTER LENS PACK OF 5 FOR SPECTRAL GOGGLE

Spectral Filter Lens 4GWF	Pk5	0701 380 228
Spectral Filter Lens 5GWF	Pk5	0701 380 161
Spectral Filter Lens 6GWF	Pk5	0701 380 162



MERCURY INDOOR/OUTDOOR SPECTACLES

Stylish spectacles for drilling, chipping and metalworking. The special abrasion-resistant lenses are suitable for high ambient light conditions, but can still be used in lower ambient light conditions thanks to the lightly shaded lens. The wrap around shape gives good coverage to the eye. CE approved according to EN 166-F. Also available with a clear lens.

Mercury indoor/outdoor	0701 415 943
Mercury clear	0700 012 009



MERCURY BLUE SPECTACLES

Stylish spectacles for drilling, chipping and metalworking. The special abrasion-resistant blue lenses are suitable for high ambient light conditions. The wrap around shape gives good coverage to the eye. CE approved according to EN 166-F.

Mercury blue	0701 415 936
--------------	---------------------

Lenses, Spectacles, Goggles & Visors



TELLUS SODIUM SPECTACLES

Protective spectacles for drilling, chipping and metalworking. They are designed and styled to provide maximum coverage for the eye. Tellus Sodium has an anti-mist lens that is especially suitable for low ambient light conditions and it gives the user unobscured peripheral vision. CE approved according to EN 166-F.

Tellus Sodium

0701 415 935



VENUS CLEAR SPECTACLES

Spectacles for drilling, chipping and metalworking. The wrap around shape gives maximum coverage to the eye. These spectacles have adjustable temple arms and abrasion-resistant lenses. CE approved according to EN 166-F.

Venus clear

0700 012 005



VENUS SHADE 5 SPECTACLES

Spectacles with shade 5 for welding inspection, profiling and brazing. The wrap around shape gives maximum coverage to the eye. These spectacles have adjustable temple arms and abrasion-resistant lenses. CE approved according to EN 166-F and EN 175.

Venus shade 5

0700 012 006



JUPITER CLEAR SPECTACLES

Spectacles for drilling, chipping and metalworking. They are available with a clear lens, features include the positive ratchet adjustment, slide-adjust temples and comfort tips. CE approved according to EN 166-F.

Jupiter clear

0700 012 003

Lenses, Spectacles, Goggles & Visors



MARS SPECTACLES

Visitor's spectacles ideal for occasional use. They have a clear polycarbonate lens and ventilated side-arms. CE approved according to EN 166-F.

Mars	0701 414 786
------	--------------



SATURN SHADE 5 SPECTACLES

Protective spectacles in shade 5 for welding inspection, profiling and brazing. The spectacles are equipped with abrasion-resistant lenses and adjustable temple arms. CE approved according to EN 166/EN 175.

Saturn shade 5	0701 362 182
----------------	--------------



SATURN CLEAR SPECTACLES

Protective spectacles for drilling, chipping and metalworking. The spectacles are equipped with abrasion-resistant lenses and adjustable temple arms. CE approved according to EN 166.

Saturn clear	0701 362 181
--------------	--------------



URANUS GOGGLES

Protective goggles with optimum coverage for the eye. Suitable for gas welding, brazing and gas cutting. CE approved according to EN 175.

Uranus	0700 012 002
--------	--------------

Lenses, Spectacles, Goggles & Visors



PLUTO GOGGLES

Suitable for grinding and chipping. Soft PVC frame and polycarbonate anti mist lens. Provides protection against liquid splashes, dusts and spatter.

Pluto

0701 414 790



NEPTUNE GOGGLES

Protective goggles shade 5, for gas welding, brazing and gas cutting. Neptune is ventilated and has a flip-front mechanism. CE approved according to EN 175/EN 166-F.

Neptune

0701 548 800



FG1 BOCAL GOGGLES

A rigid cup type goggle with nose protection indirect ventilation and 50mm lenses. Comprises of one pair of shade 4 lenses, one pair of shade 6 lenses, goggle frame, two pairs of clear cover lenses and a spare nose piece supplied in a sturdy plastic case.

FG1 Bocal

0700 110 327



SPECTRAL GOGGLES

A one piece goggle with a soft moulded body indirect ventilation and a 108 x 51mm (4 1/4" x 2") lens aperture. Fitted with a shade 4 filter and will fit over prescription spectacles.

Spectral shade 4

0700 153 594

Spectral flip front shade 4

0701 380 452

Lenses, Spectacles, Goggles & Visors



SKI WELDING GOGGLES

A soft frame one piece indirect vented goggle with panoramic lens giving a wide field of vision. Fits over prescription spectacles. Approved to EN166-F & EN169 Shade 5.

Ski welding goggle

0701 380 436



UNIVERSAL GOGGLES

Suitable for grinding and chipping. A soft PVC indirect vented goggle with a panoramic polycarbonate anti mist lens. Provides protection against liquid splashes dust and spatter at extreme temperatures. Fits over prescription spectacles. Approved to EN166 249BT.

Universal goggle

0701 380 490



GRINDING VISOR

A strong lightweight brow guard featuring an adjustable head harness and clear polycarbonate or shade 5 screen. Approved to EN166 39B.

Grinding visor clear complete

0000 595 303

Replacement visor clear

0700 012 007

Replacement visor shade 5

0700 012 008

Hearing Protection & Hard Hats



HEARING PROTECTION

ESAB's hearing protectors are available in five different versions; One that can be attached to a protective helmet, one with neck support, one with head support and finally an economy head support version. All of these provide effective protection at different decibel levels. A range of high performance disposable ear plugs are also available.

Hearing protector with neck support	SNR 26dB	0700 001 880
Hearing protector with head support	SNR 26dB	0000 595 199
Hearing protector for G22c	SNR 26dB	0367 420 002
Hearing protector for G2000c	SNR 26dB	0367 420 003
Economy ear defender	SNR 21dB	0701 380 477



Soft pliable foam, mouldable to shape of ear, conforms to EN352 pt2. Available as corded or non Corded.

Ear plugs	Pk 200	SNR 37dB	0700 001 001
Ear plugs	Pk 100 corded	SNR 37dB	0700 001 002



HARD HATS

The hard hat Eye-Tech, the G2000 and the G22c are all high quality protective helmets suitable use as an individual hard hat or in combination with welding helmets. The hard hat Eye-tech has ratchet adjustment whilst the G2000 and the G22c has a traditional strap adjustment.

Hard hat for Eye-Tech	0700 000 052
Hard hat G2000c for Albatross	0468 051 881
Hard hat G22c for Euromask	0468 051 880



BUMP CAP

The baseball bump cap provides lightweight head protection where high impact resistance is not essential, but where there is a risk of minor bumps or scrapes to the head. A high level of comfort is provided by the liner and cap design and the large side mesh panels for maximum ventilation allowed within EN 812.

Bump Cap	0700 000 925
----------	---------------------

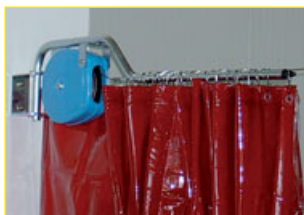
Welding Curtains & Jackets



WELDING CURTAINS

Three colour types are available and all three can be supplied as standard curtains, as well as strip curtains. The self-extinguishing material provides good protection from dangerous welding radiation. The curtains are equipped with press-studs for easy, strong fastening and they are folded at the top and the bottom to withstand harsh use. The strip curtain allows access and enables material to be passed through, even when it is closed. All approved according to prEN 1598. The mounting rings come in a package of seven, which is enough to mount any of the curtains (standard as well as strip). Choose between metal rings or PVC rings with a snap lock. Rings are included when ordering any of the curtains.

Welding curtain, dark red, 1.8 x 1.4m	0700 008 004
Welding curtain, green transparent, 1.8 x 1.4m	0700 008 005
Welding curtain, dark green (DIN 9), 1.8 x 1.4m	0700 008 006
Mounting rings PVC	0700 008 007
Mounting rings metal	0700 008 008
Welding strip curtain, dark red, 1.8 x 1.4m	0700 008 001
Welding strip curtain, green, 1.8 x 1.4m	0700 008 002
Welding strip curtain, dark green (DIN 9), 1.8 x 1.4m	0700 008 003
Mobile curtain, without wheel, dark red, 2 x 1.4m	0000 595 313
Mobile curtain, without wheel, dark red, 2 x 2m	0000 595 315
Anti flame mat 900 x 1500mm	0700 014 003



WIRE REEL FOR WELDING CURTAIN

8 meter long retractable stainless steel line to hang welding curtains. The unit is fixed to the wall and the line is tightened by using the specially designed torque control.

Wire reel for welding curtain	0700 008 018
-------------------------------	---------------------



ESAB WELDING JACKET

ESAB welding jackets are made of high-quality leather. The front is reinforced in order to withstand mechanical and thermal stress. Stitched with Kevlar thread, stand up collar and inside pocket with adjustable wrists. The shoulder jacket gives freedom of movement and is more comfortable than a standard jacket when working in a warm environment. Reinforced front and adjustable wrists. The shoulder jacket should be worn together with the apron designed for use with the shoulder jacket.

ESAB Welding jacket, M	0700 010 266
ESAB Welding jacket, L	0700 010 002
ESAB Welding jacket, XL	0700 010 003
ESAB Welding jacket, XXL	0700 010 267
ESAB Shoulder jacket, L	0700 010 004
ESAB Shoulder jacket, XL	0700 010 005
Apron for shoulder jacket (one size)	0700 010 268



Welding Aprons, Coveralls and Other Apparel



APRON

The ESAB protective aprons distribute the weight effectively. They are Kevlar stitched and 107cm long.

ESAB Apron

0700 010 007



WELDING COVERALLS (FLAME RETARDANT)

The ESAB navy fire retardant 100% cotton coverall comes with 2 chest pockets a ruler pocket and has concealed stud fastenings. Conforms to EN 531, EN 470-1 & EN 533.

ESAB Proban coverall, M

0700 010 038

ESAB Proban coverall, L

0700 010 039

ESAB Proban coverall, XL

0700 010 040

ESAB Proban coverall, XXL

0700 010 041



Murex Proban Red Coverall 38" (97cm)

0701 415 964

Murex Proban Red Coverall 40" (102cm)

0701 415 711

Murex Proban Red Coverall 42" (107cm)

0701 415 712

Murex Proban Red Coverall 44" (112cm)

0701 415 713

Murex Proban Red Coverall 46" (117cm)

0701 415 779

Murex Proban Red Coverall 48" (122cm)

0701 415 780

Murex Proban Red Coverall 50" (127cm)

0701 415 781

Murex Proban Red Coverall 52" (132cm)

0701 416 417



HANDSHEILD

The hand shield should be used together with a welding gauntlet to give extra protection against the radiated heat.

Hand shield

0700 010 009

Other Welding Apparel



MUREX PROBAN HOOD EXTENDED LENGTH

Flame resistant head protection which cover not only the head but also the neck and shoulders.

Murex proban hood extended length	0701 415 804
-----------------------------------	--------------



MUREX LEGIONNAIRE PROBAN HOOD

Flame resistant head protection which cover the head and also the nape.

Murex Legionnaire Proban hood	0701 415 807
-------------------------------	--------------



PROBAN HOOD

Flame resistant head protection which cover not only the head but also the neck, nape and shoulders.

Proban hood	0000 593 269
-------------	--------------



LEATHER GAITERS

Leather gaiters to protect the footwear during welding. The gaiters are fastened using velcro.

Leather gaiters	0700 010 008
-----------------	--------------

Other Welding Apparel



WELDING SLEEVE

Chrome leather sleeves with a total length of 47cm. Equipped with elasticated cuff and velcro arm fastening.

Welding sleeve

0000 595 039



BALACLAVA

The balaclava is worn underneath the welding helmet to give you full head protection when working in a cold environment. The balaclava is flame resistant, 100% zipro treated wool, 385 gr/m2 EN531.

Balaclava

0700 010 269



INSULATED HELMET LINER

The insulated helmet liner is worn underneath the welding helmet to offer protection from the elements when working in a cold environment.

Insulated helmet liner

0000 904 378



ELASTICATED KNEE PADS

Elasticated knee pads for use outside trousers.

Elasticated knee pads

0700 010 265

Clothing – High Visibility



FLAME RETARDANT HI VISIBILITY COVERALL

100% cotton, flame resistant, 2 zipped chest pockets, concealed stud and zip. CE approved to EN531 (A, B2, C1) and EN470-1.

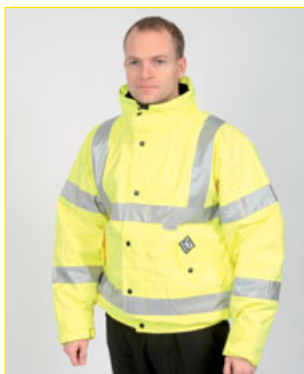
Flame Retardant Hi Vis coveralls 36" (92cm) Orange	0701 502 334
Flame Retardant Hi Vis coveralls 38" (97cm) Orange	0701 502 335
Flame Retardant Hi Vis coveralls 40" (102cm) Orange	0701 502 336
Flame Retardant Hi Vis coveralls 42" (107cm) Orange	0701 502 337
Flame Retardant Hi Vis coveralls 44" (112cm) Orange	0701 502 338
Flame Retardant Hi Vis coveralls 46" (117cm) Orange	0701 502 339
Flame Retardant Hi Vis coveralls 48" (122cm) Orange	0701 502 340
Flame Retardant Hi Vis coveralls 50" (127cm) Orange	0701 502 341
Flame Retardant Hi Vis coveralls 52" (132cm) Orange	0701 502 342
Flame Retardant Hi Vis coveralls 54" (137cm) Orange	0701 502 343
Flame Retardant Hi Vis coveralls 56" (142cm) Orange	0701 502 344
Flame Retardant Hi Vis coveralls 58" (147cm) Orange	0701 502 373



HI VIS SAFETY JACKET

Jacket Hi Vis Class 3 EN 471 using 3M reflective tape, quilted lining, elasticated storm cuffs, 2 outer pockets, zip and studded with overlap.

Hi Vis safety jacket, M	0701 415 939
Hi Vis safety jacket, L	0701 415 940
Hi Vis safety jacket, XL	0701 415 941
Hi Vis safety jacket, XXL	0701 415 942



HI VIS SAFETY JACKET BOMBER STYLE

Jacket Hi Vis Class 3 EN 471 using 3M reflective tape, quilted lining, elasticated storm cuffs, 2 outer pockets, zip and studded with overlap.

Hi Vis Bomber Jacket, S	0700 010 244
Hi Vis Bomber Jacket, M	0700 010 245
Hi Vis Bomber Jacket, L	0700 010 246
Hi Vis Bomber Jacket, XL	0700 010 247
Hi Vis Bomber Jacket, XXL	0700 010 248

Clothing – High Visibility



HI VIS SAFETY JACKET BOMBER STYLE, FLAME RESISTANT, ANTI STATIC

Orange hi visibility fire retardant anti static bomber style jacket to EN533/EN1149/EN471 High abrasion tear resistant fabric, Phone pocket, 2 large patch pockets, press stud storm flap, with concealed pocket and attached hood in collar, outer material in Active Dry breathable fabric.

Hi Vis safety jacket, bomber style, flame resistant, anti static, S	0701 502 436
Hi Vis safety jacket, bomber style, flame resistant, anti static, M	0701 502 437
Hi Vis safety jacket, bomber style, flame resistant, anti static, L	0701 502 438
Hi Vis safety jacket, bomber style, flame resistant, anti static, XL	0701 502 439
Hi Vis safety jacket, bomber style, flame resistant, anti static, XXL	0701 502 466
Hi Vis safety jacket, bomber style, flame resistant, anti static, XXXL	0701 502 467



HI VIS SAFETY VESTS

Hi vis safety vest conforming to EN471 class 1/2 complete with 3M reflective tape.

Hi Vis safety vest, 1 band, M	0701 416 044
Hi Vis safety vest, 1 band, L	0701 416 045
Hi Vis safety vest, 1 band, XL	0701 416 046
Hi Vis safety vest, 2 band, M	0701 416 041
Hi Vis safety vest, 2 band, L	0701 416 042
Hi Vis safety vest, 2 band, XL	0701 416 043

Clothing – High Visibility



HI VIS YELLOW BLACK TROUSERS

Hi vis trousers yellow/grey to EN 471 cat1 /EN531/ENV50354.

Hi Vis Yellow/Black trousers, S	0700 010 254
Hi Vis Yellow/Black trousers, M	0700 010 255
Hi Vis Yellow/Black trousers, L	0700 010 256
Hi Vis Yellow/Black trousers, XL	0700 010 257
Hi Vis Yellow/Black trousers, XXL	0700 010 258



PU OVERTROUSERS

Yellow Pu/Nylon waterproof over trousers.

Yellow PU nylon trousers, S	0700 010 259
Yellow PU nylon trousers, M	0700 010 260
Yellow PU nylon trousers, L	0700 010 261
Yellow PU nylon trousers, XL	0700 010 262
Yellow PU nylon trousers, XXL	0700 010 263

Work Clothing



GRAMPIEN COAT

PVC Coated navy quilted lining, concealed zip front, 2 front pockets.

Jacket navy Grampien, S	0700 010 224
Jacket navy Grampien, M	0700 010 225
Jacket navy Grampien, L	0700 010 226
Jacket navy Grampien, XL	0700 010 227
Jacket navy Grampien, XXL	0700 010 228



JACKET NAVY VIND

100% polyester, fleece liner, front zip pocket.

Jacket navy Vind, S	0700 010 229
Jacket navy Vind, M	0700 010 230
Jacket navy Vind, L	0700 010 231
Jacket navy Vind, XL	0700 010 232
Jacket navy Vind, XXL	0700 010 233



JACKET EXTREME 71 NORTH

Qualitex bomber style jacket Royal/Black, padded weather lining, front phone pocket concealed front zip, 4 zipped outer pockets, 1 inner zipped pocket and neck weather fastening.

Jacket Extreme 71 North, S	0700 010 234
Jacket Extreme 71 North, M	0700 010 235
Jacket Extreme 71 North, L	0700 010 236
Jacket Extreme 71 North, XL	0700 010 237
Jacket Extreme 71 North, XXL	0700 010 238



FLEECE LINED NAVY ENDEVOUR

Quality navy, lined fleece.

Fleece navy Endeavour, S	0700 010 239
Fleece navy Endeavour, M	0700 010 240
Fleece navy Endeavour, L	0700 010 241
Fleece navy Endeavour, XL	0700 010 242
Fleece navy Endeavour, XXL	0700 010 243



FLEECE UNLINED NAVY

Quality navy, unlined fleece.

Fleece unlined navy, S	0700 010 270
Fleece unlined navy, M	0700 010 271
Fleece unlined navy, L	0700 010 272
Fleece unlined navy, XL	0700 010 273
Fleece unlined navy, XXL	0700 010 274

Welding Gloves MIG/MAG

WELDING GLOVES MIG/MAG

All ESAB and Murex gloves are CE approved. The heavy duty welding gauntlets and riggers have been tested and certified by a third part notifying body. The glove is then a Cat. 2 product.



Test against mechanical stress such as abrasion, cut, tear and puncture.



Test for thermal performance such as exposure to an open flame, contact heat, convective heat, radiant heat, small and large splashes of molten metal.



HEAVY-DUTY BASIC

A heavy-duty 1.3mm welding glove made of selected cow-split leather with a lining that is both comfortable and protective. Wing thumb is angled for high comfort and dexterity. Cat. 2.

Heavy duty Basic

0700 005 007



HEAVY-DUTY REGULAR

A welding glove made of hard-wearing, heat-resistant cow-split leather, 1.3mm thick. Reinforced wing thumb fully welted KEVLAR stitched. Cat. 2.

Heavy duty Regular

0700 005 008



HEAVY-DUTY BLACK

A welding glove made of black, strong cow-grain leather. High dexterity with KEVLAR stitching ensures that the glove can resist hard mechanical stress. Fully welted. Cat. 2.

Heavy duty Black

0467 222 007

Welding Gloves MIG/MAG



HEAVY-DUTY EXL

A welding glove made of cow-split and -grain leather with a padded back to withstand high reflective heat. The threefold KEVLAR seam ensures that the glove can resist hard mechanical stress. The thumb is reinforced. Cat. 2.

Heavy duty EXL, L	0700 005 009
Heavy duty EXL, XL	0700 005 029



HEAVY-DUTY ALUMINISED

A welding glove made of cow-grain leather. The back is padded and fully lined. The aluminium-coated rayon reflects 95% of the thermal radiation. The wing thumb is angled for good comfort and KEVLAR stitched ensuring that the glove can resist hard mechanical stress. CE approved. Cat. 2.

Heavy duty Aluminised	0700 005 010
-----------------------	---------------------



MUREX SUPERIOR GAUNTLETS

A welding glove made from hard wearing, heat resistant cow split leather.

Superior Weld Gauntlet	0701 415 614
------------------------	---------------------

A welding glove made from hard wearing, heat resistant cow split leather. The palm is reinforced to give extra protection and longer life.

Superior Gauntlet Reinforced	0701 415 615
------------------------------	---------------------



RED GAUNTLET

A basic gauntlet made of selected cow-split leather with a lining that is both comfortable and protective. The wing thumb is angled for high comfort.

Red Gauntlet. Cat. 2.	0701 380 498
-----------------------	---------------------

Welding Gloves MIG/MAG & TIG Gauntlets



HANDSHIELD

The hand shield should be used together with a welding gauntlet to give extra protection against the radiated heat.

Hand shield

0700 010 009



TIG BASIC

A light weight, traditional TIG gauntlet. Cat. 1, simple design.

TIG Basic

0700 653 532



TIG SOFT

A thin pig-split welding glove suitable for TIG applications. It has a 13cm leather cuff and a reinforced thumb for good grip. The absence of an index finger seam increases flexibility. Fully welted. Cat. 2.

TIG Soft

0700 005 005



TIG SUPERSOFT

Exclusive TIG-welding glove made of goatskin with seams KEVLAR stitched. The gunn cut straight thumb makes it easy to grip different objects. The leather cuff is 13cm long and the absence of an index finger seam increases the flexibility. The dexterity is extremely good. Fully welted. Cat. 2.

TIG SuperSoft

0700 005 006

TIG Gauntlets & Riggers Working Gloves



TIG PROFESSIONAL

A quality TIG gauntlet with a reinforced thumb and 13cm long leather cuff. The palm is fully lined for increased comfort and protection. Cat. 2.

TIG Professional

0701 415 963



ESAB HEAVY DUTY WORKER

A hard-wearing work glove made of selected cow-grain leather with a cotton lining for comfort. The rubber-reinforced cuff provides extra protection and the wing thumb is angled. Cat. 2.

Heavy duty Worker

0700 005 011



SUPERIOR RIGGER

A hard wearing work glove made of cow grain leather with a cotton lining for comfort.

Superior rigger

0701 415 613



HEAVY DUTY ALL PURPOSE

A cow grain, high quality, leather glove. Fully lined and stitched with KEVLAR thread. The elasticated back increases comfort in a glove suitable for welding as well as general work. Wrap-around first finger. Cat. 2.

Heavy duty all purpose

0700 005 030

Riggers Working & General Gloves



BLUE RIGGER

A high quality blue coloured rigger with a rubberised cuff for added protection. Featuring fully lined palm and wing thumb for added comfort. Fully welted palm. Cat. 2.

Blue rigger

0701 415 586



CHEMICAL RESISTANT GLOVES

30cm long high quality nitrile gauntlet. Fully lined gimped cuff. Suitable for paintshop and many chemical and solvent applications. Cat. 2.

Nitrile Glove



0701 416 407

SAFETY FOOTWEAR

All ESAB welding footwear is tested and approved according to EN 345 (safety footwear). Depending on application, footwear should always provide appropriate protection, EN 345 gives the following guidelines:

Safety shoes and boots

Key to symbols:

- S_B** Safety Basic to EN345 200 joules toe protection
- S₁** Safety Basic, antistatic and energy absorbing heel
- S₂** Safety Basic, antistatic, energy absorbing heel and water resistant upper
- S₃** Safety Basic, antistatic, energy absorbing heel, water resistant upper and steel midsole
-  Antistatic
- DD** Dual Density
-  Steel Midsole



ESAB SAFETY SHOE **S₃** **DD**

Offers the comfort of a standard shoe and full protection according to S₃. It is easy to 'slip on' and the special microfibre soft lining makes it very comfortable to wear. The shoe is water and oil resistant and the seam is reinforced with rivets for maximum durability. The dual density sole offers a soft upper part with front and back 'bumpers' and arch support, whilst the part in direct contact with the ground offers extremely high slip resistance. The shoe is equipped with shock absorption and the TF system to prevent ankle spraining risks, also the sole is heat resistant up to 170°C. They have an elasticated gusset for wide fitting feet with Nomex® treads and high slip resistant soles.

ESAB safety shoe, size 6 1/2 (40)	0700 010 182
ESAB safety shoe, size 7 (41)	0700 010 183
ESAB safety shoe, size 8 (42)	0700 010 184
ESAB safety shoe, size 9 (43)	0700 010 185
ESAB safety shoe, size 10 (44)	0700 010 186
ESAB safety shoe, size 10 1/2 (45)	0700 010 187
ESAB safety shoe, size 11 (46)	0700 010 218

Safety Footwear



ESAB SAFETY ANKLE BOOT

Offers protection according to S3, and it prevents weld spatter from falling into the shoe. The special microfibre soft lining makes it very comfortable to wear. The boot is water and oil resistant and the seam is reinforced with rivets for maximum durability. The front is folded and fastened with velcro to give a flat and protected upper. The dual density sole offers a soft upper part with front and back 'bumpers' and arch support, whilst the part in direct contact with the ground offers extremely high slip resistance. The shoe is equipped with shock absorption and the TF system to prevent ankle spraining risks, also the sole is heat resistant up to 170°C. They have an elasticated gusset for wide fitting feet with Nomex® treads and high slip resistant soles.

ESAB ankle boot, size 6 1/2 (40)	0700 010 188
ESAB ankle boot, size 7 (41)	0700 010 189
ESAB ankle boot, size 8 (42)	0700 010 190
ESAB ankle boot, size 9 (43)	0700 010 191
ESAB ankle boot, size 10 (44)	0700 010 192
ESAB ankle boot, size 10 1/2 (45)	0700 010 193
ESAB ankle boot, size 11 (46)	0700 010 219



ESAB SAFETY RIGGER BOOT

Offers protection according to S3 and the high upper gives full protection to the shin and prevents weld spatter from falling into the boot. The boot is equipped with leather pull loops at the top, making the boot easy to slip on. The boot is water and oil resistant and the seam is reinforced with rivets for maximum durability. The dual density sole offers a soft upper part with front and back 'bumpers' and arch support, whilst the part in direct contact with the ground offers extremely high slip resistance. The shoe is equipped with shock absorption and the TF system to prevent ankle spraining risks, also the sole is heat resistant up to 170°C. They have an elasticated gusset for wide fitting feet with Nomex® treads and high slip resistant soles.

ESAB rigger boot, size 6 1/2 (40)	0700 010 194
ESAB rigger boot, size 7 (41)	0700 010 195
ESAB rigger boot, size 8 (42)	0700 010 196
ESAB rigger boot, size 9 (43)	0700 010 197
ESAB rigger boot, size 10 (44)	0700 010 198
ESAB rigger boot, size 10 1/2 (45)	0700 010 199
ESAB rigger boot, size 11 (46)	0700 010 220

Safety Footwear



ESAB ARMY BOOT

Offers protection according to S3. The laces, running all the way to the top, ensure excellent fit and they are protected from weld spatter by a leather flap, fastened by velcro. The boot is water and oil resistant and the seam is reinforced with rivets for maximum durability. The dual density sole offers a soft upper part with front and back 'bumpers' and arch support, whilst the part in direct contact with the ground offers extremely high slip resistance. The shoe is equipped with shock absorption and the TF system to prevent ankle spraining risks, also the sole is heat resistant up to 170°C. They have an elasticated gusset for wide fitting feet with Nomex® treads and high slip resistant soles.

ESAB army boot, size 6 1/2 (40)	0700 010 200
ESAB army boot, size 7 (41)	0700 010 201
ESAB army boot, size 8 (42)	0700 010 202
ESAB army boot, size 9 (43)	0700 010 203
ESAB army boot, size 10 (44)	0700 010 204
ESAB army boot, size 10 1/2 (45)	0700 010 205
ESAB army boot, size 11 (46)	0700 010 221



ESAB ANKLE BOOT ECO

The ESAB ankle boot Eco offers an S2 safety level. The boot is closed with a buckle and the shock absorbing sole offers a good slip resistance.

ESAB ankle boot Eco, 6 1/2 (40)	0700 010 206
ESAB ankle boot Eco, size 7 (41)	0700 010 207
ESAB ankle boot Eco, size 8 (42)	0700 010 208
ESAB ankle boot Eco, size 9 (43)	0700 010 209
ESAB ankle boot Eco, size 10 (44)	0700 010 210
ESAB ankle boot Eco, size 10 1/2 (45)	0700 010 211
ESAB ankle boot Eco, size 11 (46)	0700 010 222



ESAB RIGGER BOOT ECO

The ESAB welding rigger boot Eco offers an S2 safety level. The high upper gives good protection to the shin and stops weld spatter from falling into the boot. The shock absorbing sole gives good slip resistance.

ESAB rigger boot Eco, size 6 1/2 (40)	0700 010 212
ESAB rigger boot Eco, size 7 (41)	0700 010 213
ESAB rigger boot Eco, size 8 (42)	0700 010 214
ESAB rigger boot Eco, size 9 (43)	0700 010 215
ESAB rigger boot Eco, size 10 (44)	0700 010 216
ESAB rigger boot Eco, size 10 1/2 (45)	0700 010 217
ESAB rigger boot Eco, size 11 (46)	0700 010 223

Safety Footwear



HONEY NUBUCK SAFETY BOOT

This hard wearing safety boot has a Goodyear welted sole. Oil, acid and chemical resistant. The sole is heat resistant to 300°C. It has a steel midsole that is anti-slip, stylish in design with quality leather uppers and extra padded lining.

Honey Nubuck Safety Boot Size 6 (39)	0700 010 275
Honey Nubuck Safety Boot Size 7 (41)	0700 010 276
Honey Nubuck Safety Boot Size 8 (42)	0700 010 277
Honey Nubuck Safety Boot Size 9 (43)	0700 010 278
Honey Nubuck Safety Boot Size 10 (44)	0700 010 279
Honey Nubuck Safety Boot Size 11 (46)	0700 010 280
Honey Nubuck Safety Boot Size 12 (47)	0700 010 281

Fall Arrest Equipment

The Health and Safety Executive introduced new regulations dated 6th April 2005 with regards to working height. To comply with the demands of these new regulations, ESAB now offer a new range of Fall Arrest Equipment which is fully approved and tested to all relevant European Standards.



FULL BODY HARNESS

Full body harness with large padded back support, back and side attachments. Features include 45mm polyester webbing harness, shoulder, leg and chest strap adjustment. Side work positioning attachment points to EN358. Overhead rescue attachment to EN1497.

Full body harness

0700 017 001



BASIC FULL BODY HARNESS

A basic fall arrest harness with back attachment. Chest and leg strap adjustments and a rear fall arrest attachment point. Approved to EN361.

Basic full body harness

0700 017 002



WORK POSITIONING BELT

Belt fitted with side attachments and featuring 45mm polyester webbing, side working positioning attachments to EN358 and large padded back support for added comfort.

Work positioning belt

0700 017 003

Fall Arrest Equipment



SHOCK ABSORBER LANYARD AND KARABINER

Shock absorbing 1.7m lanyard and karabiner. Features include 12mm nylon. Low stretch Kenmantle rope with whipped and sewn terminations. Webbing back-up strip with energy absorber and static length of plus 22kN after an arrested fall. Approved to EN355.

Shock absorber lanyard and karabiner

0700 017 004



SCAFFOLD HOOK ATTACHMENT

Scaffold hook 58mm attachment with Kwikloc double action safety gate. Approved to EN362.

Scaffold hook attachment

0700 017 006



KARABINER 18MM

18mm screw gate carbon steel karabiner. Approved to EN362.

Karabiner 18mm

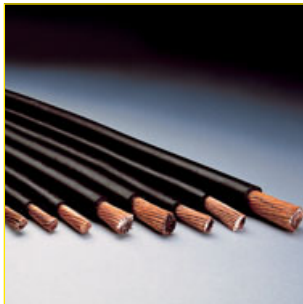
0700 017 005



Welding Tools and Accessories

A range of quality tools and accessories for welding, cutting and general engineering applications offering everything from cable connectors to high specification electrode drying ovens. All our welding tools and accessories conform to the relevant EU legislation and standards.

Cables & Connectors



WELDING CABLE, <HAR> H01N2-D

ESAB welding cable is of the highest quality and has top-class performance characteristics. This cable is approved in accordance with international standards and it is harmonised <HAR>. The cable is extremely resistant to light, chemicals and mechanical damage and it maintains its flexibility even when used in a cool environment.

Sectional area 16mm ² sold per 50m coils	0190 429 801
Sectional area 25mm ² sold per 50m coils	0262 613 601
Sectional area 35mm ² sold per 50m coils	0262 613 602
Sectional area 50mm ² sold per 50m coils	0262 613 606
Sectional area 70mm ² sold per 50m coils	0262 613 603
Sectional area 95mm ² sold per 50m coils	0262 613 604
Sectional area 120mm ² sold per 25m coils	0262 613 605

50mm Hammer Lug Pk 3	0701 380 049
95mm Hammer Lug Pk 3	0701 380 050



OKC CABLE CONNECTION

A new generation of CE-approved, fully insulated cable connections with neoprene rubber. Bayonet-type connection which locks firmly to provide safe and effective contact. The cable is fixed into a socket with two Allen screws.

OKC male 10-25mm ² ESAB	0160 360 880
OKC male 35-50mm ² ESAB	0160 360 881
OKC male 70-95mm ² ESAB	0160 360 882
OKC male 120mm ² ESAB	0160 360 883
OKC female 10-25mm ² ESAB	0160 361 880
OKC female 35-50mm ² ESAB	0160 361 881
OKC female 70-95mm ² ESAB	0160 361 882
OKC female 120mm ² (Black)	0160 361 883
OKC male 10-25mm Murex (Red)	0701 416 257
OKC male 25-50mm Murex (Red)	0701 416 258
OKC male 50-95mm Murex (Red)	0701 416 259
OKC female 10-25mm Murex (Red)	0701 416 254
OKC female 25-50mm Murex (Red)	0701 416 255
OKC female 50-95mm Murex (Red)	0701 416 256
OKC Adapter 25-50mm	0590 046 800



ZBK CABLE CONNECTION

Fully insulated with neoprene rubber. Sturdy and robust with low contact resistance. The cable is fixed into a socket with two Allen screws. The two halves of the connection in a ZBK connection are identical and can therefore be interchanged in any order.

ZBK 25-35mm ²	0265 902 482
ZBK 50-70mm ²	0265 902 481
ZBK 95-120mm ²	0265 902 480

Connectors & Electrode Holders



OKC MACHINE CONTACTS AND ANGLE CONNECTION

The contacts should be mounted on the front panel of the machine and come in three dimensions. The angle connection is supplied as OKC 50-95 male and female.

OKC machine contact for OKC 25	0160 362 880
OKC machine contact for OKC 50/95	0160 362 881
OKC machine contact for OKC 120	0160 362 882
Type 1 Angle connection, 1 male, 2 female	0365 557 001
Type 2 Angle connection, 2 male, 1 female	0365 558 001



CC17/18 CONNECTORS

These heavy-duty connectors feature the cone and bush design of cable connection. They have high quality black rubber boots with positive lock and seal. They will accept up to 70mm² copper or aluminium cable.

CC17 Plug	0700 606 402
CC18 Socket	0700 606 403



ELECTRODE HOLDER ESAB 200, 400 AND 500

ESAB's CE-approved screw-type electrode holder offers many advantages including:

- Excellent current transfer between electrode and holder
- Two hole positions at 45 and 90 for welding in different positions
- Electrode cable held in place by two Allen screws
- All electrode holders are fully insulated to provide maximum safety

ESAB 200, 200 A (35%)	0333 249 001
ESAB 400, 400 A (35%)	0369 849 880
ESAB 500, 500 A (35%)	0369 850 880



ELECTRODE HOLDER OPTIMUS

A closed head electrode holder allowing the electrode to be fitted either horizontally or vertically. The electrode holder is made of glassfibre-reinforced plastic. All Optimus electrode holders are fully insulated.

Optimus 300, 400 A (35%)	0760 001 300
Optimus 400, 500 A (35%)	0760 001 400
Optimus 600, 600 A (35%)	0760 001 600

Electrode Holders



ELECTRODE HOLDER SAMSON

An open head electrode holder, the Samson is the 'classic' electrode tong design of electrode holder, made of a glassfibre-reinforced plastic. All Samson electrode holders are fully insulated.

Samson 300, 300 A (60%)	0760 002 300
Samson 400, 400 A (60%)	0760 002 400
Samson 500, 500 A (60%)	0760 002 500



ECO HOLDER HANDY

A 'screw type' electrode holder with a fully insulated head and handle.

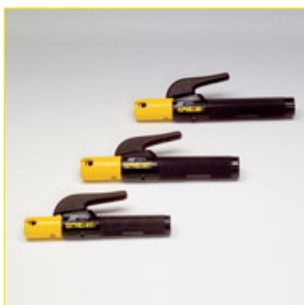
Handy 200, 200 A (35%)	0700 006 003
Handy 300, 300 A (35%)	0700 006 016
Handy 400, 400 A (35%)	0700 006 013



ECO HOLDER CONFORT

An open head electrode holder with a fully insulated head and handle.

Confort 200, 200 A (35%)	0700 006 004
Confort 300, 300 A (35%)	0700 006 005
Confort 400, 400 A (35%)	0700 006 015



ECO HOLDER PRIMA

A closed head electrode holder with a fully insulated head and handle.

Prima 200, 200 A (35%)	0700 006 006
Prima 300, 300 A (35%)	0700 006 007
Prima 400, 400 A (35%)	0700 006 014

Electrode Holders & Clamps



MUREX HANDICOOL

This is a crocodile style electrode holder, which is made from black phenolic resin insulated jaws and black handle. The holder is fully insulated for extra safety and copper jaws for good contact.

600A Handicool Electrode Holder

0700 605 378



MUREX ECON

This is a twist grip, short stub electrode holder. All the electrode is available for use and the angle allows the hand to remain away from the weld pool. The handle is used to apply torque to the electrode clamp in the head.

Econ 405 Electrode Holder

0701 380 433

Econ 605 Electrode Holder

0701 380 434



MK 150, MP 200, MP 300 AND MP450

The MK 150 is a fully galvanised earth clamp with a maximum opening of 50mm. The MP 200, MP 300 and MP 450 are robust earth clamps with strong gripping power for good contact. The maximum opening for the MP 200 is 50mm and 55mm and 60mm for the MP 300 and MP 450 respectively.

MK 150, 150 A (35%)

0682 103 801

MP 200, 200 A (35%)

0367 558 880

MP 300, 300 A (35%)

0682 103 803

MP 450, 450 A (35%)

0000 419 450



RETURN CLAMP EG 600 AND JK3

The EG 600 is an extremely robust earth clamp made of brass. The welding cable is attached using a hexagonal socket screw and the clamp has a maximum opening of 50mm and a maximum capacity of 600 amperes. The JK3 is a C-clamp model, galvanised and with a maximum opening of 48mm and maximum capacity of 500 amperes.

EG 600, 600 A (35%)

0160 288 001

JK 3, 500 A (35%)

0000 103 588

Clamps



ECO CLAMPS

An earth clamp that provides good contact with the work piece and is available in two sizes.

Eco clamp 250, 250 A (35%)

0700 006 001

Eco clamp 400, 400 A (35%)

0700 006 002



RETURN CLAMP CC11

This clamp is robustly constructed from substantial castings. The screw lever allows maximum compression to the workpiece. Suitable for up to 600 amps.

CC11 Screw Type Earth Clamp

0701 400 000

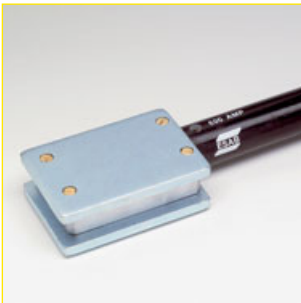


MAGNETIC CLAMPS

Magnetic earth clamps with strong gripping power that permits attachment to any ferrous object. These clamps provide a large contact area with less overheating thanks to fewer junctions.

Magnetic earth clamp 400 A (35%)

0000 500 415



Magnetic earth clamp 600 A (35%)

0000 500 416



ROTATABLE EARTH COUPLINGS

A good connection to the workpiece is needed to obtain optimal manual or automatic welding. For rotating workpieces, an earth connection with a rotatable earth coupling is the safest choice. A range of current couplings is available. To attach the coupling to the workpiece, special clamps are available. (Please see: Return clamps for rotating workpieces).

NKK 400 - max 400 A, (1.65 kg)	0000 595 133
NKK 600 - max 600 A, (2.2 kg)	0700 004 007
NKK 800 - max 800 A, (2.7 kg)	0700 004 001
NKK 1200 - max 1200 A, (4.0 kg)	0700 004 002
NKK 2000 - max 2000 A, (7.3 kg)	0700 004 003



RETURN CLAMPS FOR ROTATING WORKPIECES

The earth clamps K2 or PZ3 can be mounted directly on to the rotatable earth coupling to create a good contact between the work piece and the return cable. The return clamps can also be used together with the GA 800 to form a complete earth clamp that can handle high current welding on none rotating work pieces.

GA 800 - handle connection for K2	0700 004 005
-----------------------------------	---------------------



K2 - clamp head for NKK 800 or 1200	0700 004 004
-------------------------------------	---------------------



PZ3 - pole clamp for NKK 2000	0700 004 006
-------------------------------	---------------------

Anti Spatter



ESAB ECO-TECH ANTI SPATTER

The ESAB Eco-Tech is a high performing anti spatter spray, which is completely safe, both for the welder and environment. The propellant is compressed air, hence it is completely none-combustible. The solvent free liquid should be applied in a thin layer before welding. The Eco-Tech is water based and does not contain anything that can interfere with painting, galvanising or any other after treatments.

ESAB Eco-Tech anti spatter 300 ml	0700 013 007
ESAB Eco-Tech anti spatter 10 litre	0700 013 008
ESAB Eco-Tech anti spatter 25 litre	0700 013 009
Tap for 10 litre	0700 014 017
Tap for 25 litre	0700 014 018
Hand spray bottle	0000 138 408



ESAB HIGH-TECH ANTI SPATTER

Combines uncompromising efficiency with active environmental and health protection. The High-Tech spray effectively prevents spatter from sticking on the work piece. The High-Tech weld-protect air-spray is absolutely non-combustible, has no toxic classification, uses no harmful gases and is safe for the skin. The propellant is compressed air, it is solvent free and gives no indirect air pollution or contribution to the greenhouse effect. It is absolutely silicon-free and water-soluble.

High-Tech 400 ml	0760 025 500
High-Tech 10 litre	0760 025 010
High-Tech 25 litre	0760 025 025
Hand spray bottle	0000 138 408



ESAB PRE-WELD ANTI SPATTER

The ESAB Pre-Weld fluid is so much more than a traditional anti spatter. ESAB have managed to develop a product that has a much higher concentration of the active substance than any other product available. The product does not evaporate off the work piece, it gives extraordinary protection all the way from the very edge of the weld and out across the work piece. But still the product is vegetable oil and completely safe, no dangerous/harmful substances are included. The fluid is absolutely silicon free and water-soluble, there are no problems with painting or with any other after treatments.

The spray can contains 600 ml of active fluid, no solvents. The fluid is kept in an aluminium bag inside the can. The pressure surrounding the bag forces the fluid out when the valve is opened. This allows the can to be sprayed at any angle and still allows you to get every drop of fluid from the can. Note that it is only active fluid that is released, this is what makes the product so efficient.

ESAB Pre-Weld anti spatter 600 ml
ESAB Pre-Weld anti spatter 10 litre
ESAB Pre-Weld anti spatter 25 litre
Tap for 10 litre
Tap for 25 litre
Hand spray bottle

0700 013 013
0700 013 014
0700 013 015
0700 014 017
0700 014 018
0000 138 408



ESAB JIG AND TOOL PROTECTION

The ESAB Jig and Tool protection prolongs the lifetime of the welding shroud and contact tip as well as giving an extremely good protection to tools and jigs. The spray dries quickly and leaves a heat resistant layer (1300°C) and it does not burn off. Hardly any spatter sticks to the surface and if it does, a gentle wipe with the glove will remove it.

ESAB Jig and Tool protection, 400 ml

0700 013 016



ESAB SPATTER SHIELD

The ESAB Spatter shield prolongs the lifetime of the welding shroud and contact tip. Apply the fluid by dipping the torch and let the fluid dry. The fluid creates a heat resistant layer that prevents spatter from sticking. The spatter shield should be applied 2-3 times per 8-hour shift to give protection. Unlike tip dip products, when using the ESAB spatter shield you will NOT experience any problems with porosity created by drops of anti spatter falling down into the weld.

ESAB Spatter shield, 250 ml

0700 013 017

Anti Spatter, Chemical Sundries & Indicators



CLEAN WELD WELDING PASTE

Prevents spatter from sticking as it forms a heat-resistant coat. The hot gas nozzle on the welding torch should be dipped about 20-25mm into the paste for effective results. Odourless and contains no solvents, silicone or abrasive agents and is delivered in a 0.5kg metal can.

Clean Weld welding paste, net weight 0.5kg

0365 560 001



NON DESTRUCTIVE TESTING AEROSOLS

The ESAB NDT testing should be used to identify cracks in a weld. The process consists of 6 steps and to perform the test a cleaner, a penetrant and a developer is required. The procedure should be as follows: **1** - Use ESAB cleaner and wipe dry. **2** - Spray ESAB Penetrant, leave for 15 min. **3** - Wipe away the penetrant from the surface. **4** - Use the cleaner in a dry cloth, wiping in one direction only. Wipe dry. **5** - Shake and then spray on the developer, leave for 10 min. **6** - Remove the developer and dye using the cleaner.

ESAB NDT Penetrant 300 ml Aerosol

0700 013 018

ESAB NDT Developer 400 ml Aerosol

0700 013 019

ESAB NDT Cleaner 300 ml Aerosol

0700 013 020



ESAB LEAK DETECTOR

The ESAB gas leak detector can be used on the gas hoses leading from the gas cylinders or on the regulators in order to detect a gas leakage. The product is sprayed on and in case of a leakage the liquid will create bubbles. The composition does NOT contain any aggressive substances.

ESAB Leak Detector Pistol Type, 500 ml

0700 013 021



TEMPERATURE INDICATORS

These temperature sticks mark the surface of the piece to be heated with the appropriate temperature. The mark has a dull, chalky appearance. When the desired temperature is reached, the mark quickly dissolves into a glossy, transparent liquid. This glossy appearance is retained after cooling. Ignore any colour change, melting is the only sign that the correct temperature has been reached.

Indicator 52°C

0000 916 120

Indicator 73°C

0000 916 121

Indicator 132°C

0000 916 128

Indicator 152°C

0000 916 124

Indicator 166°C

0000 916 131

Indicator 253°C

0000 916 127

Indicator 371°C

0000 916 130

Chemical Sundries



ESAB MASK SPRAY

Apply the ESAB mask spray on the inner and outer protective lens to keep it mist free.

Mask spray, 200 ml

0000 595 312



PROTECTIVE UV-CREAM

ESAB's UV skin-protection cream protects the parts of the body that are exposed to UV rays during welding or welding inspections. This cream is also water-resistant. Sunshade factor 19.

Protective cream, 100 ml

0349 501 033



WELD MARKER

The ESAB weld marker marks all metal, wood, plastic, glass and hard surfaces. Low chloride colour makes it safe for marking stainless steel and nuclear applications. Do not roll tube. Dries in five minutes.

Weld marker, white

0700 013 003

Metal marker, yellow

0701 415 418



WELD MARKER KIT

The weld marker kit consists of three differently coloured pens, red, green and black. The pens can be used on most types of material.

Weld marker kit

0700 013 004

Chipping Hammers



PNEUMATIC CHIPPING HAMMER HCB

This high impact speed chipping hammer produces virtually no vibration in the hand as a result of a built-in balance system, which absorbs recoil and counteracts shaking. A range of chisels are available for the HCB, they all have a tungsten-carbide tip and offer a long service life. Narrow chisel: 15mm wide for normal de-slugging and cleaning. Wide chisel: 35mm wide for removing spatter and de-burring after gas cutting.

Chipping hammer HCB

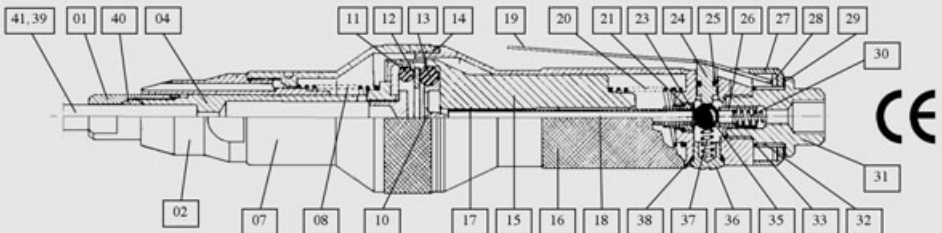
0193 305 001

SPARES FOR PNEUMATIC CHIPPING HAMMER HCB (Fig 15)

1	Nut HCB	0156 626 001	26	Ball Retainer	0156 626 022
2	Front Housing HCB	0193 306 004	27	Cover HCB	0156 626 023
4	Impact Piston Compl.	0156 626 004	28	Washer HCB	0156 626 024
7	Housing HCB	0156 626 007	29	Securing Ring HCB	0156 626 025
8	Spring HCB	0156 626 008	31	Nipple HCB	0156 626 027
10	Air Feed Valve	0193 306 012	32	Sleeve HCB	0156 626 028
11	O-Ring HCB	0156 626 009	33	O-Ring HCB	0156 626 029
12	Ring Valve HCB	0156 626 010	35	Valveball HCB	0156 626 031
13	O-Ring HCB	0156 626 011	36	Screw HCB	0156 626 032
14	Locking Ring HCB	0156 626 012	37, 30	Spring HCB	0156 626 026
15	Balancing Piston HCB	0156 626 013	38	O-Ring HCB	0156 626 033
16	Housing HCB	0156 626 014	39	Chisel 15 x 100mm	0156 627 001
17	O-Ring HCB	0193 306 014	39	Chisel 35 x 100mm	0156 627 002
18	Tube Compl HCB	0156 626 015	39	Chisel 15 x 200mm	0156 627 006
19	Trigger HCB	0156 626 016	39	Chisel 15 x 300mm	0156 627 007
20	Spring HCB	0156 626 017	40	Clamp Ring HCB	0156 626 034
21	O-Ring HCB	0156 626 018	41	Sound-damping chisel	0156 627 004
23	O-Ring HCB	0156 626 019	*	Chisel extension	0156 627 005
24	Valve Piston	0156 626 020	*	Stopscrew HCB	0156 626 030
25	O-Ring HCB	0156 626 021			

* Not shown

SPARES FOR PNEUMATIC CHIPPING HAMMER HCB (Fig 15)



Chipping Hammers & Fillet Gauges



CHIPPING HAMMER SH2 AND SH3

The SH2 chipping hammer is made of special high-quality steel, and has a user-friendly handle. The SH3 is a small hammer with a chisel and tip and steel handle with a plastic grip.

Chipping hammer SH2

0000 663 000

Chipping hammer SH3

0683 200 001



WOODEN CHIPPING HAMMERS

High quality tempered head and wooden handle. Chisel and point ends.

Martellina wood

0000 915 051

Wooden Chipping Hammer TH/5

0701 380 106

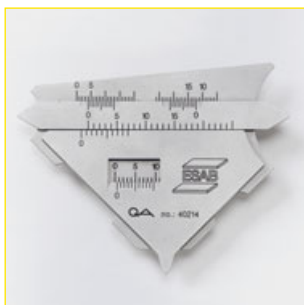


FILLET GAUGE KL-1 LASER

To measure the A dimension of fillet welds. Two measurement areas: max. 7mm and max. 15mm. Complete with a leather pocket.

Fillet gauge KL-1 laser

0000 139 931



FILLET GAUGE KL-2 LASER

To measure the A dimension of a fillet welds, the leg (small side of a right-angled triangle) and weld reinforcement height. Complete with leather pocket.

Fillet gauge KL-2 laser

0000 139 932

Fillet Gauges & Small Tools



FILARC FILLET GAUGE

To measure the a-dimension on measurement area 3-11mm, K-dimension and 50° and 60° groove angle. Also on fast measurement 4, 5, 6 and 7mm a-dimension and gaps of 1.5, 2 and 3.5mm

Filarc Fillet gauge

0000 593 268



INOX FILLET GAUGE

To measure the a-dimension of fillet welds and to measure the butted joint weld reinforcement height. Equipped with three scales. Measurement area 0-15mm and measurement sharpness +0,1mm

INOX Fillet gauge

0000 593 720



MUREX FILLET GAUGE

A general purpose Fillet Gauge

Fillet Gauge

0701 414 769



UNIVERSAL TOOL

Pliers specially designed for MIG/MAG welding. Removes spatter from the nozzle, cuts the wire and the tool makes it easy to remove the contact tip and gas shroud.

Universal Tool

0000 134 716

Universal Tool Mini

0000 139 054



FIX PLIERS

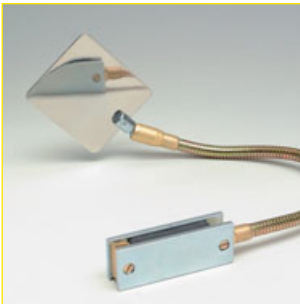
Fast effective cutting of welding wire and removal of burnt wire. Removes spatter from gas and contact nozzle and can be used for attaching and removing of contact, intermediate and gas nozzles.

Fix 1 12-15mm

0760 022 100

Fix 2 15-18mm

0760 022 200



INSPECTION MIRRORS

Stainless steel inspection mirror for inspecting welds.

Inspection mirror 500mm, with magnetic base

0000 595 319



MIG/MAG GUN HOLDER

The MIG/MAG gun holder is simple and practical device for the convenient holding of the MIG/MAG gun when not in use. It is equipped with a magnetic foot for stability and is suitable for use with most MIG/MAG welding guns.

MIG/MAG gun holder

0760 022 300



TIG TORCH HOLDER

The TIG torch holder is a simple and practical device for the convenient holding of the TIG torch when not in use. It is equipped with a magnetic foot for stability and is suitable for use with most TIG torches.

TIG torch holder

0760 022 400

Small Tools



MAGNETIC POSITION HOLDERS

The powerful magnets keep the work piece in place when welding or soldering plates together at angles. The large model can support weights up to 80kg whilst the small one can support up to 45kg.

Magnetic position holder small	0700 014 015
Magnetic position holder large	0700 014 016



MUREX NOZZLE CLEANER SET

Prolongs the life of welding and cutting nozzles. Murex nozzle cleaner does not file the nozzle bore. Each set contains a range of nozzle cleaners from 0.46mm to 1.74mm.

Nozzle Cleaner Set	0700 153 391
--------------------	--------------



MUREX COMBINATION SPANNER

For use with Murex gas equipment. Fits kennedy nut, hose nut and cylinder valve.

Combination Spanner	0701 414 766
---------------------	--------------



MUREX SPINDLE KEY

Provides the correct leverage for opening cylinder valves.

Spindle Key K5	0701 380 120
----------------	--------------



MUREX SL3 CUP SPARKLIGHTER

A standard cup type sparklighter.

SL3 Cup Sparklighter	0701 380 220
SL3 Flints Pk 5	0701 380 221

MUREX SL2 SPARKLIGHTER PISTOL

A pistol type sparklighter

SL2 Sparklighter Pistol	0700 154 807
Flints Pk9 (SL2)	0700 119 695



WIRE BRUSHES

Lightweight, easy-to-use steel brushes with wooden handles. Available with two, three or four rows of bristles.

Two-row mild steel brush	0760 024 100
Three-row mild steel brush	0760 024 200
Murex three-row mild steel brush converging	0700 158 228
Four-row mild steel brush	0760 024 300
Two-row stainless steel brush	0760 024 500
Three-row stainless steel brush	0760 024 600
Murex three-row stainless steel brush converging	0700 158 231
Four-row stainless steel brush	0760 024 700

Cylinder Trolleys

CYLINDER TROLLEYS

All cylinder Trolleys have a hardwearing red epoxy coated finish and chains to hold the cylinder upright. Large rugged wheels mean the trolley can be wheeled over the roughest ground.



TR3 TROLLEY	
Takes one oxygen and one Acetylene cylinder.	
TR3 Trolley	0700 123 772



OXY/PROPANE TROLLEY	
Takes one oxygen and one Propane cylinder.	
Oxy/Propane Trolley	0700 151 549



UNIVERSAL SINGLE TROLLEY	
Takes one standard cylinder	
Universal Single Trolley	0700 153 384

ESAB Drying Equipment



PK 1 DRY-STORAGE CONTAINER

The PK 1 is a light and handy dry-storage container for electrodes. It is easy to carry and has a storage temperature of around 100°C. The heating element runs from the top to the bottom and the top is fully insulated.

Capacity	9kg
Storage temp. (°C)	100
Drying temp. (°C)	N/A
Voltage (V)	24/42/110/230
Output (kW)	0,1
Outer dimension (Ø/height, mm)	225/610
Inner dimension (Ø/height, mm)	100/470
Weight (kg)	6

PK 1, 24 V	0000 515 063
PK 1, 42 V	0000 515 052
PK 1, 110 V	0000 515 062
PK 1, 230 V	0000 515 064



PK 5 DRYING EQUIPMENT

The PK 5 is a combined drying and dry-storage system for most types of electrodes. The drying time at full effect is 1-7 hours depending on the type of electrode. The temperature is thermostatically controlled and ranges from 50-300°C. The electrodes should be stored in the PK 5 without packaging. The heating element runs from the top to the bottom and the top is fully insulated.

Capacity	24kg
Storage temp. (°C)	70-300
Drying temp. (°C)	N/A
Voltage (V)	110/230
Output (kW)	0,5
Outer dimension (Ø/height, mm)	345/660
Inner dimension (Ø/height, mm)	116/460
Weight (kg)	13

PK 5 drying equipment, 110 V	0700 011 070
PK 5 drying equipment, 230 V	0000 515 075



SK 40 DRY-STORAGE CABINET

The SK 40 is a dry-storage cabinet with 4 removable shelves for storing electrodes. The electrodes should be stored without packing. The cabinet is equipped with a thermometer, thermostat and control lamp. Temperature range 50-180°C.

Capacity	120kg
Storage temp. (°C)	50-180
Drying temp. (°C)	N/A
Voltage (V)	230
Output (kW)	0,7
Outer dimension (WxDxH, mm)	530x640x750
Inner dimension (WxDxH, mm)	470x510x520
Weight (kg)	55

SK 40 dry-storage cabinet, 230 V	0000 515 102
----------------------------------	---------------------

ESAB Drying Equipment



PK 40 DRYING CABINET

The PK 40 is a robust cabinet for the drying and dry storage of electrodes, with space for 10 packs. The drying time is set manually at between 50 and 350°C. Dimensions 570 x 620 x 790mm. Weight 70kg.

Capacity	72kg
Drying temp. (°C)	50-350
Voltage (V)	230
Output (kW)	1,5
Outer dimension (WxDxH, mm)	570x620x790
Inner dimension (WxDxH, mm)	460x510x520
Weight (kg)	70

PK 40 drying cabinet, 230 V

0000 515 105



PK 410 DRYING CABINET

The PK 410 is a robust cabinet for the drying and dry storage of electrodes. The drying temperature can be regulated between 50 and 400°C (450°C 3-phase). The dry-storage temperature is around 150°C. The PK 410 is equipped with a control lamp, electronic thermometer and electronic thermostat. The PK 410 also has a 7-day timer. This timer makes it possible to change automatically from drying to dry storage at selected times and temperature ranges.

230V

Capacity	252kg
Storage temp. (°C)	50-400
Drying temp. (°C)	50-400
Voltage (V)	230
Output (kW)	3,5
Outer dimension (WxDxH, mm)	860x760x1280
Inner dimension (WxDxH, mm)	655x485x635
Weight (kg)	230

400V

Capacity	252kg
Storage temp. (°C)	50-400
Drying temp. (°C)	50-400
Voltage (V)	400-3
Output (kW)	4,5
Outer dimension (WxDxH, mm)	860-760-1280
Inner dimension (WxDxH, mm)	665x485x635
Weight (kg)	230

PK 410 drying cabinet, 230 V, 1-phase

0000 515 103

PK 410 drying cabinet, 400 V, 3-phase

0000 515 108

ESAB Drying Equipment



JS 200 STORAGE SILO

The JS 200 is a storage silo for welding powder (flux). The JS 200 keeps the flux dry and clean and also makes it extremely easy to handle the flux. The temperature can be adjusted between 100 and 300°C.

Capacity	200 Lt
Storage temp. (°C)	100-300
Drying temp. (°C)	N/A
Voltage (V)	230
Output (kW)	2
Outer dimension (WxDxH, mm)	510x570x1755
Weight (kg)	110

JS 200 storage silo

0000 515 090



JK 50 POWDER DRIER

The JK 50 is a container for drying and storing welding powder (flux). The JK 50 dries 50 litre flux at a maximum temperature of 500°C in around three hours. After drying, the temperature falls automatically to the pre-set dry storage temperature (150°C) within 12 hours.

Capacity	50 Lt
Storage temp. (°C)	50-250
Drying temp. (°C)	50-500
Voltage (V)	400-3
Output (kW)	3,7
Outer dimension (Ø/height, mm)	860/1600
Weight (kg)	190

JK 50, 400 V, 3-phase

0000 515 091

Alternative Drying Ovens



HEATED QUIVER P8C

The P8C is a small portable oven suitable for dry-storage of up to 8kg of electrodes. The heating element is located in the bottom of the oven, all electrodes are in contact with the heat source, insuring that all electrodes are heated evenly.

Capacity	8kg
Storage temp. (°C)	182
Drying temp. (°C)	N/A
Voltage	24/72/230/48-85 Vdc
Output	0,13kW
Outer dimension (WxDxH, mm)	140x140x597
Inner dimension (WxDxH, mm)	76x76x464
Weight (kg)	8

Heated Quiver P8C 230V (type A)	0000 908 014
Heated Quiver P8C 72V (type A)	0000 908 015
Heated Quiver P8C 24V (type A)	0000 908 016
Heated Quiver P8C 48-85 DC (type A)	0000 908 030



STORAGE OVEN P15C

The P15 is a portable dry-storage oven with a capacity to store 15kg of electrodes. The heating element is located in the bottom of the oven insuring that all electrodes are heated evenly. The electrodes are kept in a basket, which can be pulled out, ie. no need to put the hands in the oven to collect the electrodes.

Capacity	15kg
Storage temp. (°C)	190
Drying temp. (°C)	N/A
Voltage	24/72/230/48-85 Vdc
Output	0,275kW
Outer dimension (WxDxH, mm)	203x216x629
Inner dimension (WxDxH, mm)	105x105x469
Weight (kg)	9

Storage Oven P15C 230V (type A)	0000 908 037
Storage Oven P15C 72V (type A)	0000 908 036
Storage Oven P15C 24V (type A)	0000 908 034
Storage Oven P15C 48-85 DC (type A)	0000 908 008

Alternative Drying Ovens



DRYING CABINET MEC1 AND MEC2

The MEC1 and MEC2 are storage ovens for bigger quantities of electrodes. The walls and the door is fully insulated to ensure even heating of the electrodes. The thermostat is located on the top of the oven and the shelves can be removed, enabling storage of welding wire spools.

MEC1

Capacity	300kg
Storage temp. (°C)	190
Drying temp. (°C)	N/A
Voltage	230
Output	2,5 kW
Outer dimension (WxDxH, mm)	810x1000x720
Inner dimension (WxDxH, mm)	650x550x520
Weight (kg)	95

MEC2

Capacity	450kg
Storage temp. (°C)	190
Drying temp. (°C)	N/A
Voltage	400
Output	5,1 kW
Outer dimension (WxDxH, mm)	810x1270x720
Inner dimension (WxDxH, mm)	650x810x520
Weight (kg)	117

Drying Cabinet MEC1 230V single phase

0000 908 070

Drying Cabinet MEC2 400V 3 phase

0000 908 073

Alternative Drying Ovens



DRYING CABINET C3/C6/C9

The series C drying cabinets are used to remove the moisture from the consumables. The ovens are fully insulated and it can also be used for dry-storage once the electrodes have been dried. The shelves are removable and the models have 3, 6 and 9 shelves respectively.

C3

Capacity	225kg
Drying temp. (°C)	350
Voltage	400
Output	4,7 kW
Outer dimension (WxDxH, mm)	850X780X920
Inner dimension (WxDxH, mm)	650X500X580
Weight (kg)	180

C6

Capacity	450kg
Drying temp. (°C)	350
Voltage	400
Output	9 kW
Outer dimension (WxDxH, mm)	850X780X1360
Inner dimension (WxDxH, mm)	650X500X1000
Weight (kg)	230

C9

Capacity	450kg
Drying temp. (°C)	350
Voltage	400
Output	13,7 kW
Outer dimension (WxDxH, mm)	850X780X1790
Inner dimension (WxDxH, mm)	650X500X1420
Weight (kg)	280

Drying Cabinet C3 400V 3 phase	0000 908 065
Drying Cabinet C6 400V 3 phase	0000 908 084
Drying Cabinet C9 400V 3 phase	0000 908 081



FLUX DRYER C200

The C200 flux oven can be used for the re-baking of up to 160 kg of flux. The chamber is made from stainless steel to avoid any contamination. The C200 has a gate valve at the bottom, making it easy to empty the oven. The temperature control unit is located at the top of the oven.

Capacity	160kg
Drying temp. (°C)	350
Voltage	400
Output	3,75 kW
Weight (kg)	125

Flux Dryer C200 400V 3 phase	0000 908 079
------------------------------	---------------------

Alternative Drying Ovens



QUIVERS

Heated Quivers are designed for use on installations with 100 volt or 240 volt supply. The quiver will maintain an even temperature of 100°C dependant on the amount of electrodes stored. Complete with handle/stand.

Supply	110v or 110/240v. AC 50/60Hz
Load	150 watts
Overall dimensions (WxDxH, mm)	120x500x110
Weight Empty	3 Kilo
Capacity	9kg of Welding Electrodes

Heated Quiver 110 V	0701 380 485
Heated Quiver 110/240V	0701 380 486
Insulated Heated Quiver 240v	0701 502 358



PORTABLE DRYING OVEN-DUAL VOLT

This oven is designed for rugged site conditions, where it can be used as either a holding or storage oven.

Temperature range	100-300°C thermostatically controlled
Supply	110.240v. (Dual voltage)
Load	300 watts
Overall dimensions (WxDxH, mm)	175x610x210
Internal dimensions (WxDxH, mm)	115x480x150
Weight Empty	10 Kilo
Capacity	13kg of Welding Electrodes

Portable Drying Oven Dual Volt	0701 380 083
--------------------------------	---------------------



STATIONARY DRYING OVEN

These ovens can be used as the sole means of drying or as the intermediary, until transferred to a portable oven or a quiver.

Temperature range	100-300°C thermostatically controlled
Supply	110/240v. (Dual voltage)
Load	1500 watts
Overall dimensions (WxDxH, mm)	520x620x610
Internal dimensions (WxDxH, mm)	455x470x455
Weight Empty	42 Kilo
Capacity	136kg of Welding Electrodes

Stationary Drying Oven 250V AC	0700 655 258
Stationary Drying Oven 110V AC	0700 655 259

Alternative Drying Ovens



STATIONARY DRYING OVEN DIGITAL

As the Stationary Oven, but with a digital display

Stationary Oven Digital 250V AC

0701 502 381

HIGH TEMPERATURE OVENS

The robust, high temperature oven has a digital display. It has accurate temperature control from 0 – 500°C. Visual temperature indication is by the digital display. Temperature settings are digitally set.

High Temp Oven - Digital Display

0701 380 408

As above but with Chart Recorder

High Temp Oven - CR DD Timer

0701 380 410

SPARE PARTS FOR ESAB PK1

Heating Element 24V	0700 011 001	Signal Lamp 110V	0700 011 007
Heating Element 42V	0700 011 002	Signal Lamp 230V	0700 011 008
Heating Element 110V	0700 011 003	Hinged Lid	0700 011 010
Heating Element 230V	0700 011 004	Knob	0700 011 011
Signal Lamp 24V	0700 011 005	Handle	0700 011 012
Signal Lamp 42V	0700 011 006		

SPARE PARTS FOR ESAB PK5

Heating Element	0700 011 015	Thermostat	0700 011 017
Signal Lamp	0700 011 016	Thermometer	0700 011 018

SPARE PARTS FOR ESAB SK40

Heating Element	0700 011 020	Thermostat	0700 011 023
Signal Lamp Red	0700 011 021	Thermometer	0700 011 024
Signal Lamp Green	0700 011 022		

SPARE PARTS FOR ESAB PK40

Heating Element, Top	0700 011 071	Thermostat	0700 011 073
Heating Element, Bottom	0700 011 072	Contacteur	0700 011 074

SPARE PARTS FOR ESAB PK410

EMC-Filter	0700 011 039	Controller	0700 011 045
Heating Element, Top	0700 011 040	Sensor	0700 011 046
Heating Element, Bottom	0700 011 041	Timer	0700 011 047
Signal Lamp Green Big	0700 011 042	Contacteur	0700 011 048
Signal Lamp Red Big	0700 011 043	Main Switch	0700 011 049
Signal Lamp Red, Small	0700 011 044	Auto-Manual Switch	0700 011 050

SPARE PARTS FOR ESAB JS200

Heating Element	0700 011 030	Thermostat	0700 011 032
Signal Lamp	0700 011 031	Thermometer	0700 011 033

SPARE PARTS FOR JK50

Heating element	0700 011 082
-----------------	--------------

Spare Parts

SPARE PARTS FOR OVEN MODEL P8C

Neoprene Electrical Cord 2 Mt.	0081 000 026	Heating element 130W - 48V	0081 000 039
Neoprene Electrical Cord for 110V, 2 Mt.	0081 000 023	Heating element 130W - 72V	0081 000 050
Cord fastener	0081 000 027	Heating element 130W - 110V	0081 000 051
Pilot lamp 12V (for voltages 48-72 and 48-85V)	0081 000 030	Elemento riscaldante 130W - 230V	0081 000 061
Pilot Lamp 24V	0081 000 029	Drop resistor (2, for voltage 48-85V)	0082 000 013
Pilot Lamp 110V	0081 000 110	Spark Capacitor (for voltage 48-85V)	0081 000 008
Pilot Lamp 230V	0083 000 220	Thermostat	0081 000 031
Heating element 130W - 48/85V	0081 000 032	Support plate foe heating element 80x70	0082 000 009
Heating element 130W - 24V	0081 000 033	Thermometer (optional)	0081 000 009

SPARE PARTS FOR OVEN P15C

Neoprene Electrical Cord 2 Mt.	0081 000 026	Heating element 275W - 48V	0082 000 002
Neoprene Electrical Cord for 110V, 2 Mt.	0081 000 023	Heating element 275W - 72V	0082 000 005
Cord fastener	0081 000 027	Heating element 275W - 110V	0082 000 006
Pilot lamp 12V (for voltages 48-72 and 48-85V)	0081 000 030	Heating element 275W - 230V	0082 000 004
Pilot Lamp 24V	0081 000 029	Drop resistor (2, for voltage 48-85V)	0082 000 013
Pilot Lamp 110V	0081 000 110	Spark Capacitor (for voltage 48-85V)	0081 000 008
Pilot Lamp 230V	0083 000 220	Thermostat	0081 000 031
Heating element 275W - 48/85V	0082 000 003	Support plate foe heating element 90x110	0081 000 040
Heating element 275W - 24V	0082 000 000	Thermometer (optional)	0082 000 046

SPARE PARTS FOR REBAKING OVENS MODEL C3 - C6 - C9

Thermal regulator 0°C - 400°C	0090 000 052	Heating element 1300W - 220V (for C3 n°1, for C6 n°3, for C9 n°4)	0090 000 133
Thermometer 0°C - 500°C	0092 100 050		
Heating element 1700W - 220V (for C3 n°2, for C6 n°3, for C9 n°5)	0090 000 132		

SPARE PARTS FOR LARGE HOLDING OVENS MODEL MEC1 - MEC 2

Thermostat	0081 000 031	Heating element 2500W - 230V (for MEC1 n°1)	0090 000 133
Thermometer 0°C - 500°C	0092 100 050		
Heating element 1700W - 230V (for MEC1 n°1, for MEC2 n°3)	0092 100 163		

SPARE PARTS FOR FLUX REBAKING AND HOLDING OVENS MODEL C100 - C200 - C400

Thermal regulator 0°C - 500°C	0090 000 089	Short heating element 1250W - 220V (for C100 n°2, for C200 n°2, for C400 n°4)	0092 500 051
Thermometer 0°C - 500°C	0092 100 050		
Long heating element 1250W - 220V (for C100 n°1, for C200 n°1, for C400 n°2)	0092 500 050		

SPARE PARTS FOR MUREX DRYING EQUIPMENT

Element Stat Oven 240v Pk 2	0701 380 149	Element 240V Kit (Portable Oven)	0701 411 237
Element 110V (Quiver)	0701 380 487	Thermostat 110/240V (Ovens)	0701 411 240
Toggle Switch (Quiver)	0701 380 488		



Special Process Equipment

Completing the extensive accessory portfolio from ESAB is our Special Process Equipment range, which includes tungsten grinders, gouging torches and fume extraction units. As with all our products our Special Process Equipment range conforms to all relevant EU legislation and standards.

Tungsten Grinders



G-TECH HANDY

The G-Tech Handy is an easy to use tungsten electrode grinder. The grinding angle can be adjusted easily, using just one hand. The G-Tech Handy grinds electrodes with dimensions of 1.0 to 4.0mm and it is equipped with a dust filter. The speed (rpm) can be adjusted and the unit weighs just 2.8kg. The G-Tech Handy is delivered in a durable hard case that makes it easy to transport.

G-Tech Handy, 230 V, 50 Hz

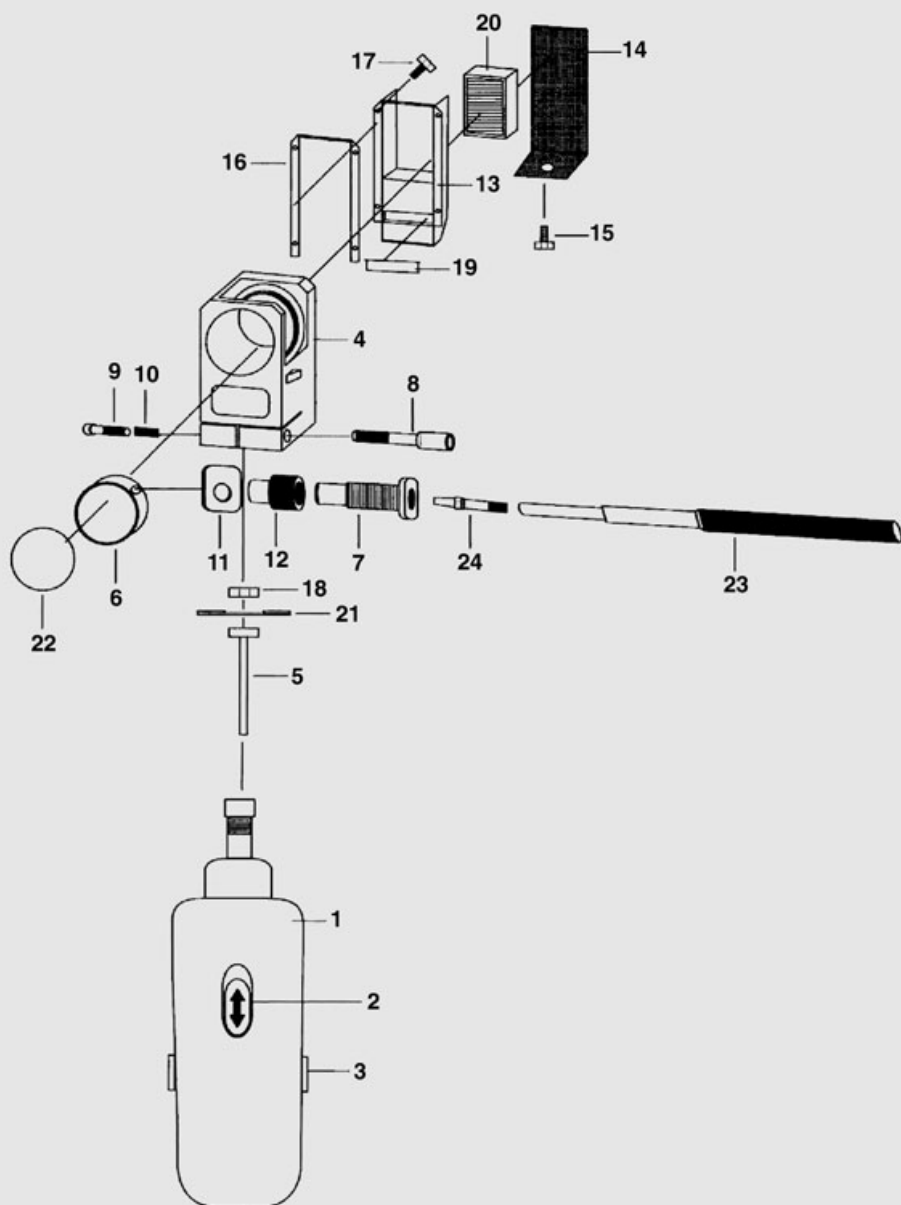
0700 009 883

SPARES FOR G-TECH HANDY (Fig 16)

1	Motor 230 V	0700 009 041
2	ON/Off switch	0700 009 042
3	Carbon brush	0700 009 044
4	Grinding head	0700 009 045
5	Spindle for diamond disc	0700 009 046
6	Grinding chamber	0700 009 047
7	Guide for electrode holder	0700 009 048
8	Allen key	0700 009 049
9	Allen screw	0700 009 050
10	Spring	0700 009 056
11	grinding position selector	0700 009 051
12	Screw	0700 009 052
13	Filter housing	0700 009 053
14	Filter cover	0700 009 054
15	Allen key to fix the filter cover	0700 009 055
16	Rubber seal big	0700 009 057
17	Screw to fix filter cassette	0700 009 058
18	Screw to fix diamond disc	0700 009 059
19	Rubber seal small	0700 009 060
20	Filter cassette	0700 009 029
21	Diamond disc	0700 009 028
22	Inspection glass	0700 009 037
23	Electrode holder	0700 009 030
24	Collet body 1,0mm	0700 009 034
24	Collet body 1,6mm	0700 009 031
24	Collet body 2,0mm	0700 009 035
24	Collet body 2,4mm	0700 009 032
24	Collet body 3,2mm	0700 009 033
24	Collet body 4,0mm	0700 009 036
	Case for the machine (not shown)	0700 009 061

Tungsten Grinders

SPARES FOR G-TECH HANDY Fig 16



Tungsten Grinders & Electrodes



G-TECH and SPARES

The ESAB G-Tech is a tungsten-electrode grinder with a unique enclosed wet-grinding system. A wet grinding system is the most effective protection from thoriated tungsten grinding dust. All dust is collected in the liquid and the risk of oxidation of the electrode is reduced. The grinding angle can be adjusted and the tip can be grind in a 90 degrees angle to make it less pointed. The small table seen in the picture is not included and is not available from ESAB.

G-Tech 230V, 50Hz	0700 009 880
G Tech 115V 50Hz (UK)	0700 009 881
Gasket	0700 009 001
Diamond Disc, G-Tech (inc nut)	0700 009 002
Liquid 250 ml	0700 009 004
Return Bottle 250 ml	0700 009 005
Collet Body 1,0mm G-Tech	0700 009 007
Collet Body 1,6mm G-Tech	0700 009 008
Collet Body 2,0mm G-Tech	0700 009 018
Collet Body 2,4mm G-Tech	0700 009 009
Collet Body 3,2mm G-Tech	0700 009 010
Collet Body 4,0mm G-Tech	0700 009 011
Collet Body 4,8mm G-Tech	0700 009 019
T-Piece	0700 009 012
Spacer Piece	0700 009 013
Liquid 5000 ml	0700 009 015
Accessory box complete	0700 009 016
Waste Container	0700 009 017
Accessory box complete	0700 009 020
Inspection Glass	0700 009 037
Kit - Inspection window G-Tech with seal	0700 009 038
Kit - Electrode holder and handle	0700 009 039
Kit - Seal abrasive wheel with seal and 'O' ring	0700 009 040



TIG PEN

The TIG PEN allows the welder to control the tip of the filler wire with great accuracy even at a long distance from the weld seam and in the process helps the welder to obtain a higher quality weld. It also eliminates waste of the filler wire. The TIG Pen can be used with any wire diameter from 1.0 to 3.2mm

TIG PEN	0700 009 026
---------	--------------

Tungsten Electrodes



TUNGSTEN ELECTRODES

This is a high-quality range of tungsten electrodes available in thoriated, ceriated, pure and lanthanated (Gold Plus) versions. ESAB tungsten electrodes have excellent welding and ignition properties. They are delivered in plastic boxes, each containing ten electrodes. The electrodes are available in 150 and 175mm lengths.

WT20 1,0 x 175mm (Thoriated)	Red	0151 574 001
WT20 1,6 x 175mm (Thoriated)	Red	0151 574 002
WT20 2,4 x 175mm (Thoriated)	Red	0151 574 003
WT20 3,2 x 175mm (Thoriated)	Red	0151 574 004
WT20 4,0 x 175mm (Thoriated)	Red	0151 574 005
W Pure 1,0 x 175mm	Green	0151 574 008
W Pure 1,6 x 175mm	Green	0151 574 009
W Pure 2,4 x 175mm	Green	0151 574 010
W Pure 3,2 x 175mm	Green	0151 574 011
W Pure 4,0 x 175mm	Green	0151 574 012
WC20 1,0 x 175mm (Ceriated)	Grey	0151 574 036
WC20 1,6 x 175mm (Ceriated)	Grey	0151 574 037
WC20 2,4 x 175mm (Ceriated)	Grey	0151 574 038
WC20 3,2 x 175mm (Ceriated)	Grey	0151 574 039
WC20 4,0 x 175mm (Ceriated)	Grey	0151 574 040
WL15 1,0 x 175mm Gold Plus (Lanthanated)	Gold	0151 574 050
WL15 1,6 x 175mm Gold Plus (Lanthanated)	Gold	0151 574 051
WL15 2,4 x 175mm Gold Plus (Lanthanated)	Gold	0151 574 052
WL15 3,2 x 175mm Gold Plus (Lanthanated)	Gold	0151 574 053
WL15 4,0 x 175mm Gold Plus (Lanthanated)	Gold	0151 574 054
WL15 4,8 x 175mm Gold Plus (Lanthanated)	Gold	0151 574 055
WT20 1,0 x 150mm (Thoriated)	Red	0151 574 201
WT20 1,6 x 150mm (Thoriated)	Red	0151 574 202
WT20 2,0 x 150mm (Thoriated)	Red	0151 574 244
WT20 2,4 x 150mm (Thoriated)	Red	0151 574 203
WT20 3,2 x 150mm (Thoriated)	Red	0151 574 204
WT20 4,0 x 150mm (Thoriated)	Red	0151 574 205
W Pure 1,0 x 150mm	Green	0151 574 208
W Pure 1,6 x 150mm	Green	0151 574 209
W Pure 2,0 x 150mm	Green	0151 574 245
W Pure 2,4 x 150mm	Green	0151 574 210
W Pure 3,2 x 150mm	Green	0151 574 211
W Pure 4,0 x 150mm	Green	0151 574 212
WC20 1,0 x 150mm (Ceriated)	Grey	0151 574 236
WC20 1,6 x 150mm (Ceriated)	Grey	0151 574 237
WC20 2,0 x 150mm (Ceriated)	Grey	0151 574 242
WC20 2,4 x 150mm (Ceriated)	Grey	0151 574 238
WC20 3,2 x 150mm (Ceriated)	Grey	0151 574 239
WC20 4,0 x 150mm (Ceriated)	Grey	0151 574 240

Gouging Torches



K4000 (Fig 17)

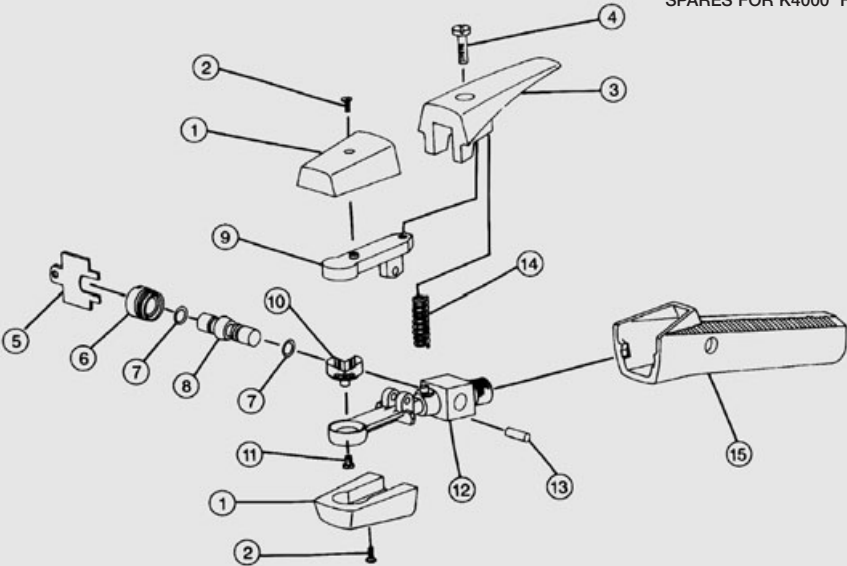
The arc air gouging torch is supplied with a 2.14m (7') long cable. The torch accepts both round and flat electrodes, ranging in size from 4 mm ($\frac{5}{32}$ ") to 13 mm ($\frac{1}{2}$ ") round electrodes and 10 mm ($\frac{3}{8}$ ") and 16 mm ($\frac{5}{8}$ ") flat electrodes. The K4000 is rated at 1,000 Amps, it uses compressed air between 5.6 and 7.0 kg/cm² (80 and 100 psi) and between 0.85 and 0.99 m³/min (30 and 35 cfm). The torch and cable weigh 2.4kg (5.4lbs). Supplied without connections.

Gouging torch including monocable	0760 018 100
K4000 torch	0760 018 110
Mono cable K4000	0760 018 119
1 & 2 Insulator assy	0760 018 101
3 & 4 Levery assy	0760 018 103
5 to 8 Valve bonnet assy	0760 018 106
9 Upper arm	0760 018 112
10 & 11 Nozzle	0760 018 113
12 Body	0760 018 115
13 Hinge pin	0760 018 116
14 Spring	0760 018 117
15 Handle	0760 018 118

Spares for Monocable

'O' Ring kit	0760 018 121
Clamp kit	0760 018 125
Conductor kit	0760 018 126
Hose cover	0760 018 130
Book insulator	0768 018 131

SPARES FOR K4000 Fig 17



Gouging Torches



FLAIR 600 AND 1600

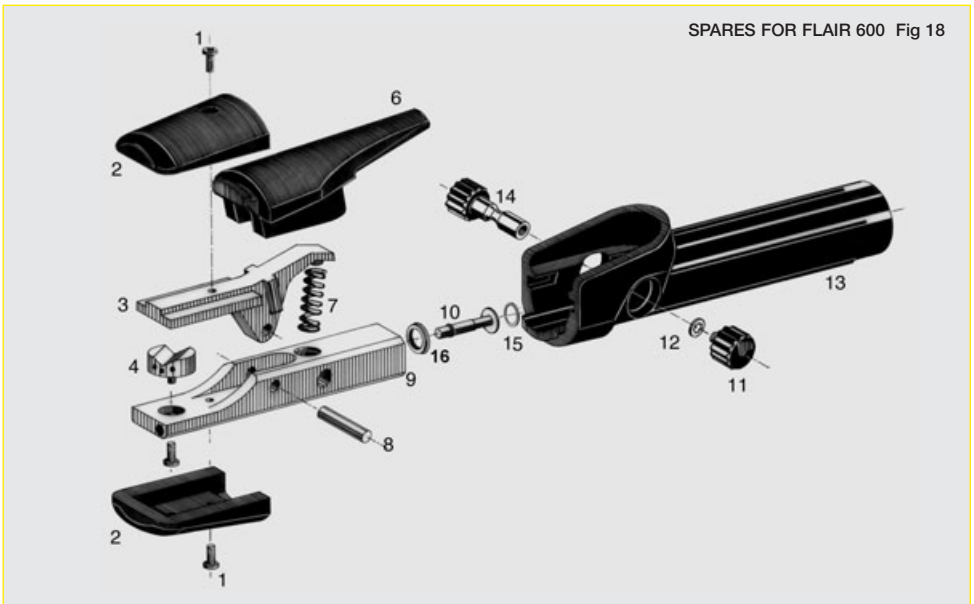
The Flair 600 arc air torch for carbon up to 10 mm ($\frac{3}{4}$ ") and 4 x 15mm ($\frac{5}{32}$ x $\frac{9}{16}$ ") rectangular. The Flair 1600 arc air torch for carbon up to 19mm ($\frac{3}{4}$ ") and 5 x 20mm ($\frac{3}{16}$ x $\frac{3}{4}$ ") rectangular.

Flair 600, incl monocable	0468 253 880
Torch only	0468 253 016
Monocable only	0468 253 015

Flair 1600, incl monocable	0468 253 881
Torch only	0468 253 036
Monocable only	0468 253 035

SPARES FOR FLAIR 600 (Fig 18)

1	Set of screws	0468 253 001
2	Insulating Caps	0468 253 002
3	Brass Lever	0468 253 003
4	Injection Nozzle	0160 580 001
6	Lever Insulation	0468 253 006
7	Spring	0468 253 007
8	Hinge Pin	0468 253 008
9	Body	0468 253 005
10	Valve	0468 253 010
15 & 16	Valve Seat	0468 253 009
11,12,14	Push Button + Link	0468 253 014
13	Handle	0468 253 013



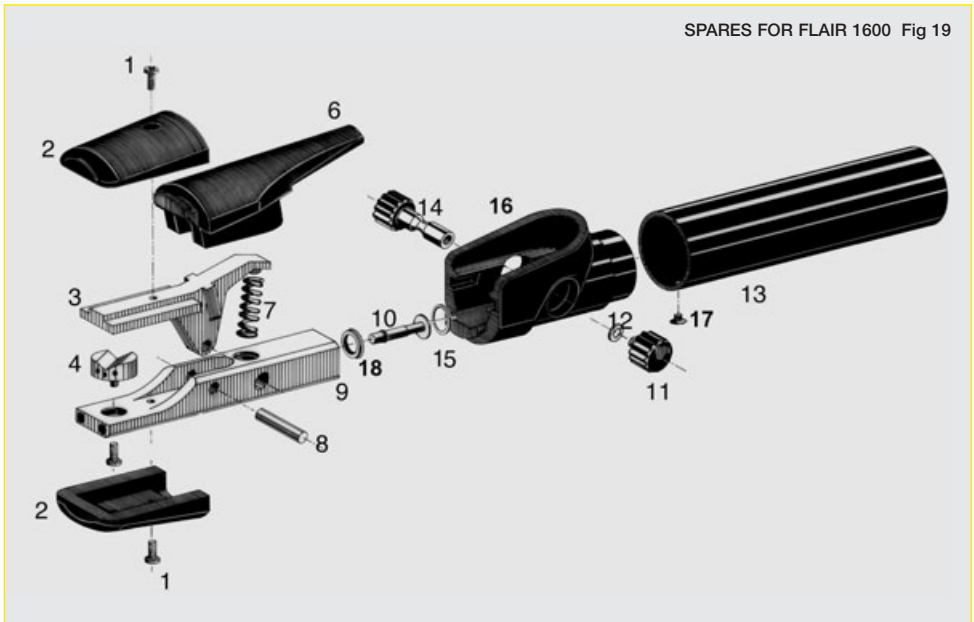
SPARES FOR FLAIR 600 Fig 18

Gouging Torches

SPARES FOR FLAIR 1600 (Fig 19)

1	Set of screws	0468 253 001
2	Insulating Caps	0468 253 002
3	Brass Lever	0468 253 023
4	Injection Nozzle	0468 253 024
6	Lever Insulation	0468 253 006
7	Spring	0468 253 027
8	Hinge Pin	0468 253 008
9	Body	0468 253 025
10	Valve	0468 253 010
15 & 18	Valve Seat	0468 253 009
11,12,14	Push Button + Link	0468 253 014
13,16,17	Handle	0468 253 033

SPARES FOR FLAIR 1600 Fig 19



Gouging Torches



OK CARBON

Arc air gouging with carbon electrodes and compressed air is the fastest and cheapest process for cutting/gouging material in conjunction with repairs and the like. A carbon electrode is used to melt the material and, at the same time, a powerful jet of air blows away the molten material. The compressed air also cools the carbon electrode. Carbon electrodes can be used for the arc air gouging of unalloyed and low-alloy steel, stainless steel, cast iron and other metals. A complete set of arc air gouging equipment consists of a torch like the Flair 600 or Flair 1600, alternatively the K4000 with mono cable. OK Carbon, ESAB's focused but comprehensive range of arc air carbons enables the user to gouge in a wide range of applications, within foundries, steel industry, shipbuilding, steel construction and in maintenance workshops. The OK Carbon range gives the user the highest possible efficiency by removal of metal per unit length or unit time.

DC Pointed, 4 x 305mm Pk 100	0700 007 002
DC Pointed, 5 x 305mm Pk 100	0700 007 003
DC Pointed, 6,35 x 305mm Pk 200	0700 007 004
DC Pointed, 8 x 305mm Pk 200	0700 007 006
DC Pointed, 10 x 305mm Pk 100	0700 007 007
<hr/>	
DC Pointed, 6,35 x 510mm Pk 200	0700 007 104
DC Pointed, 8 x 510mm Pk 150	0700 007 106
DC Pointed, 10 x 510mm Pk 50	0700 007 107
DC Pointed, 13 x 455mm Pk 50	0700 007 108
<hr/>	
DC Jointed, 10 x 430mm Pk 100	0700 007 410
DC Jointed, 13 x 430mm Pk 50	0700 007 411
DC Jointed, 16 x 430mm Pk 50	0700 007 412
DC Jointed, 19 x 430mm Pk 25	0700 007 413
<hr/>	
AC Jointed, 4 x 355mm Pk 100	0700 007 414
AC Jointed, 5 x 355mm Pk 50	0700 007 415
AC Jointed, 6,5 x 355mm Pk 50	0700 007 416
AC Jointed, 8 x 355mm Pk 50	0700 007 417
AC Jointed, 9,5 x 355mm Pk 50	0700 007 418
<hr/>	
DC Rectangular, 4 x 15 x 305mm Pk 125	0114 800 112
DC Rectangular, 5 x 15 x 305mm Pk 125	0700 007 502
DC Rectangular, 5 x 20 x 305mm Pk 100	0700 007 503

Fume Extraction Units



CARRYVAC 2

The Carryvac 2 P150/P150 AST are two small, lightweight, portable extraction units designed to be carried to the working area. Connected to a welding torch or to an extraction nozzle, the Carryvac 2 units extract the fume directly at source. The polluted air is filtered and captured in a hygienically-packed filter. The Carryvac 2 is equipped with a filter indicator, which shows when the filter must be replaced. It is ideal for maintenance welding, low and medium-duty cycle. The filter capacity is approximately 200kg of solid wire or twelve 15kg spools. The Carryvac 2 P150 AST is equipped with an automatic start/stop function, which increases the service life of each filter and of the unit itself. Please also see ESAB Centrovac extraction torch range.



Carryvac 2 P150 220-240V	0700 003 883
Carryvac 2 P150 AST 220-240V	0700 003 884
Carryvac 2 P150 110-120V	0700 003 885
Carryvac 2 P150 AST 110-120V	0700 003 886
Motor 220-240V	0468 455 021
Motor 110-120V	0468 455 022
Hose 45mm, 1.6m	0154 352 015
Hose 45mm, 3.5m	0154 352 008
Hose 45mm, 5m	0154 352 006
Hose 45mm, 15m	0154 352 002
Main filter Carryvac 2	0700 003 004
Main filter Carryvac (previous model)	0468 455 001
Pre filter	0468 455 002
PC-board including cables	0700 003 005
Carbon brushes	0700 003 010
Coarse separator complete	0468 455 014
Suction nozzle TM-80, round 80mm	0700 100 080
Suction nozzle TM-200, 200mm wide	0700 100 200
Suction nozzle PM-300, 300mm wide	0700 100 300
Magnet for suction nozzle	0332 010 880

With over 100 years of experience in virtually every type of welding and cutting application across all industries, ESAB has an unrivalled ability to solve welding and cutting problems wherever in the world they may occur. ESAB also has one of the most comprehensive product ranges in the welding and cutting industry.

The ESAB Product Portfolio includes:

Standard Equipment

- Manual Metal Arc Welders
- Semi Automatic MIG/MAG Welders
- TIG Welders
- Pulsed Arc Welders
- Manual Plasma Cutters
- Submerged Arc Welders
- Orbital TIG Welders
- Engine Driven Welders

Automatic Equipment

- Column & Boom
- Positioners
- Roller Beds
- Beam Welding Systems
- Mechanised TIG
- Plasma Welders
- Welding Tractors
- Storage Tank Welders
- Strip Cladding Systems
- Joint Tracking Systems
- Integrated Engineering Systems
- Turnkey Installations
- Friction Stir Welders

Automated Cutting Equipment

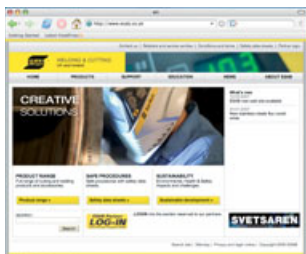
- Oxy-Fuel Gas Cutters
- Plasma Cutters
- Laser Cutters
- Water Jet Cutters

Welding Consumables

- Manual Metal Arc Electrodes
- MIG/MAG Wires
- Flux Cored Wires
- Metal Cored Wires
- TIG Rods
- Sub Arc Fluxes and Wires
- Strip Cladding

Welding Accessories

- Helmets and goggles
- Hearing protection
- Respiratory equipment and masks
- Fall Arrest Equipment
- Clothing and gloves
- Welding screens
- Welding cable, connectors and lugs
- Electrode holders
- Anti spatter and chemicals sundries
- General tools



Euro Optimum d.o.o.
 Bozidareviceva 9 - Zagreb
 PJ Popovec - Varaždinska 59
 POPOVEC 10360 CROATIA

Tel +385 91 209 95 98
 Fax +385 1 2331 563
 Fax +385 1 60 55 748
 www.euro-optimum.hr

